

screen printing



Product Listing 2010

screen cloth

Note: Screen cloths may be divided into four grades of size: Very coarse open mesh for fabric printing with water-based inks (8XX or 35T); coarse mesh for water-based inks on paper and with Hydrograph processes (10/12XX); medium mesh for general purpose printing with oil-based inks (77T); fine mesh for photographic screen printing (90T). There are two basic types of mesh: multifilament woven and professional monofilament. Monofilament polyester has the strength of steel and as a single strand filament is more easily cleaned. Multifibre is hard to completely clean, but is inexpensive to buy.



S192.01

A MULTIFILAMENT

S192.03 Multifilament Polyester 12XX
1.2 metres wide, per metre. Swiss.

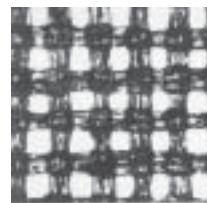
B MONOFILAMENT

S192.04 Monofilament Polyester 43T
157cm wide, per metre. German.

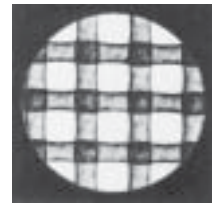
S195.01 Monofilament Polyester 60T
158cm wide, per metre. Swiss.

S193.01 Monofilament Polyester 77T
157cm wide, per metre. Swiss.

S194.01 Monofilament Polyester 90T
60" wide, per metre. Swiss.



S192.01



S193.01

screen frames - general

Dressed selected wooden pairs of arms, 30x45mm cross-section. The frames can be ordered in monofilament from 43T, recommended for fabric printing, while the 77T is better for paper as it does not release as much ink, being more economical and at the same time, giving less buckling to the paper printed on. 90T is for pure photographic images.

PRE-STRETCHED SCREEN FRAMES

Made from quality cedar, these frames are pre-stretched and mesh secured with epoxy resin for waterproof face and maximum strength. Full lap joints are double screwed and glued with water proof glue.

Note: All dimensions are taken from inside inches.

A 43T MONOFILAMENT - WATER BASE INK

S196.06 Stretched Frame 43T A4

S196.07 Stretched Frame 43T A3

S196.08 Stretched Frame 43T A2



S196.06

B 77T MONOFILAMENT - HIGH QUALITY

S196.10 Stretched Frame 77T 12x16"

S196.11 Stretched Frame 77T 16x22"

S196.12 Stretched Frame 77T 22x26"

C43TRESTRETCHING SCREENS

- S197.14** Stretched Frame 90T 12x16"
- S197.15** Stretched Frame 90T 16x22"
- S197.16** Stretched Frame 90T 21x26"

S196.084 Screen Frames - Mono, Economy

Made from shellac-sealed pinewood and stretched with 43T monofilament mesh.

- S196.084** 8x10" (20x25)
- S196.085** 10x12" (25x30)
- S196.086** 12x15" (30x38)
- S196.087** 16x21" (40x53)

screen frames - speedball

S196.05B Screen Frames - Fast Changeover

Unique design for fast changeover of screen cloth with push-in cord which secures the new screen in place, as well as tightening up the mesh to the correct tension for printing. Screens come with 12XX mesh, and are made from strong knot-free pine.

- S196.05B** Screen 8x10" (200x250)
- S196.05C** Screen 10x14" (250x360)
- S196.05D** Screen 12x16" (300x400)

S196.05E Screen Mesh

Replacement packs for above screens; simply insert cord into groove.

- S196.05E** 6 sheets - 8x10"/10x14" frames
- S196.05F** 6 sheets - 12x16" frames

screenprinting kits - speedball

S198.02 Speedball Classic Kit - Paper

Designed for paper and card. Comprises 10x14" frame plus base unit, 9" squeegee; 4 x 8oz tubs of acrylic ink (Cyan, Magenta, Yellow, Black); screen filler, drawing ink and instructions. Ideal for stampers, limited edition printmaking, wedding invitations and stationary projects.

S198.01 Speedball Classic Kit - Fabric

Designed for use with light fabrics. Comprises 10x14" frame, 9" squeegee, 3 x 8oz tubs of fabric ink (Red, Yellow and Black); screen filler, drawing ink, Diazo photo emulsion and photo emulsion remover; and instruction booklet. Ideal for T-shirts; fabric and fashion design course subjects; banners and flags.

S198.03 Speedball Kit - Opaque Fabric

Designed for use with dark fabrics. Comprises 10x14" frame, 9" squeegee, 3 x 8oz tubs of pearlescent screen ink (Silver, Raspberry, Topaz Blue); screen filler, drawing ink, Diazo photo emulsion, photo emulsion remover and instruction booklet.

S198.04 Speedball Kit - Ceramic Underglaze

Colours may be screenprinted or directly painted onto earthenware or stoneware. Totally opaque colours (7). Use for sgraffito technique.



S198.04

S198.03 Speedball Ceramic Kit

Comprises 7 glazing colours and brushes in kit form.

squeegees - economy

S199.041 Squeegee, Economy - Speedball

230mm.



S199.041

S199.04 Squeegee, Square - Speedball

Square edge. 9".



S199.04

S199.05 Squeegee, Round - Speedball

Round edge (for use with fabric). 9".



S199.05

S199.06 Squeegee, Wooden Handle

Economy.

- S196.061** A4
- S196.062** A3
- S196.063** A2

squeegees - professional

S200.08 Squeegee Blades - Polyurethane
9x60mm. Sold per cm.

S200.00 Squeegee - HFAW, Aluminium

Professional squeegee with aluminium handle designed for light weight use with strength. Wooden top rail stops squeegee from dropping the ink on the screen. Aluminium lower edge bites into the polyurethane to seal and prevent ink bleed. German polyvolcanon is machined sharp on 2 edges - will last a lifetime.

S200.001	100mm
S200.01	250mm
S200.03	350mm
S200.06	480mm
S200.07	580mm
S200.08	650mm



S200.02

S199.51 Squeegee - Professional, Speedball

Large shaped wooden handle with polyurethane blade.

S199.51	200mm
S199.52	300mm
S199.53	360mm



S199.51

screen films

S196.04 Ruby Mask Film Sheets

Lacquer-based stencil cutting film on clear heavy plastic; adheres to screen with solvent-dampened rag. Simply dry and peel off the backing sheet. Can be used for both water and oil-based inks. Sheet measures 510x630mm.

Note: Use only with a solvent face mask.

S196.05 Frisket Film Rolls

Rolls measure 610 x 3.6 metres.

screen fillers - blockouts

Squeegee on to screen with small pieces of cardboard to fill backgrounds and pinholes.

S206.02 Screen Filler - Speedball

S206.02	8 oz (250ml)
S206.01	32 oz (1000ml)



S207.02

S206.03 Drawing Fluid - Speedball

S206.03	8 oz (250ml)
S206.04	32 oz (1000ml)

S206.20 Liquid Stencil

Traditional old style 'iron out' wax stencil that comes as a liquid and may be painted on direct or stamped onto screen mesh to block out background areas. Excellent technique for impasto style brush strokes and raggy marks. Note that Sennelier extra soft oil pastels may also be used in the same way. After screen printing ink washout, simply iron out wax onto bulky newsprint with an iron set to 'wash and wear'. 200ml.

S201.01 Mask It Stencil - Self-adhesive

Simply cut out the areas to print solid with a stencil knife, either solid (or swivel end if doing a lot of curves), remove the backing and adhere to underside of screen.

S201.01	8 sheet pack 10x15" (25x38cm)
S201.03	Roll 15" (38 cm) x 3.6 mt
S201.04	Roll 25" (63 cm) x 3.6 mt

screen photo emulsions

E028.8 Matt Acetate Rolls

Use for hand-drawn photo stencils. Measure 1200 x 3.6 metres.

E028.29 Drafting Film

Measures 760 x 1000mm.

E028.23 Wet Media Acetate Sheets

For making hand-drawn painted stencils or inkjet printer. Photo-positive film. Sold per sheet.

E028.23A	760 x 1000mm
E028.23B	500 x 760mm

S206.5 Photo Emulsion Kit - Diazo

Mix contents per instruction for a fast and easy method of image reproduction. Comes with screen emulsion remover. Made by Speedball (USA).



S206.5

S206.04 Photo Emulsion, Large - Speedball
For sharp high quality images. Sold per jar, 32oz.

S206.40 Sensitizer - Speedball
Sensitizer for use with above emulsion. 2oz.

S206.41 Photo Emulsion Remover - Speedball
8 oz container.

S206.42 Photo Emulsion - Murakami
Pre-mixed. 250ml.

S206.51 Screenprinting Video - Speedball
Excellent instructional video - 55mins.

screen inks - derivan

S250.00 Derivan Screen Inks - Water-based (250ml)

These inks are acrylic-based and non-toxic. Although manufactured for textile use, they are mainly used as an inexpensive screen ink in schools and at home for works on paper with a medium screen such as 77T. When required for use on T-shirts and textiles, a coarser mesh (45T or 60T) is recommended to gain greater ink thickness and subsequent colour coverage. The textile/garment may be heat set after drying to ensure that the ink is fixed into the cloth itself. Instructions are on the ink labels and may be done by ironing, heat gun or microwave oven. (Approx. 4-5 minutes at 140 -150 degrees C).



Derivan has the following colours in two sizes, 250ml and 1000ml. Derivan White is a double pigment style and therefore more expensive than the other regular colours. All fluorescent and metallic colours are more expensive and care must be exercised with fluorescent colours as they are less light stable over time.

250ml

- S231.01 Black
- S231.03 Lemon Yellow
- S231.04 Mid Yellow
- S231.05 Golden Yellow
- S231.06 Yellow Orange
- S231.07 Bright Orange
- S231.08 Scarlet
- S231.09 Mid Red
- S231.10 Bright Red
- S231.11 Brilliant Pink
- S231.12 Royal Blue
- S231.13 Turquoise Blue
- S231.14 Light Green
- S231.15 Mid Green

S250.00 Derivan Screen Inks - (1000ml)
All above colours available in 1000ml pot.

S232 Derivan Supercover White Ink
250ml tub.

S230.00 Derivan Fluorescent Screen Inks
250ml tubs.

- S230.01 Fluorescent Yellow
- S230.02 Fluorescent Red
- S230.03 Fluorescent Blue
- S230.04 Fluorescent Magenta
- S230.05 Fluorescent Orange

S252.14 Derivan Metallic Screen Inks
Silver, gold and copper. 250ml tub.

S233.00 Derivan Screen Ink Reducer
250ml pot.

S234.00 Derivan Screen Printing Gel

May be mixed with any Derivan acrylic paints to convert paint into screen ink. Also used to reduce the colour strength of screen inks and when applied to the screen, prevents drying out of ink in the mesh over a short period of time.

- S234.00 500ml
- S235.00 2 litres

S236.00 Derivan Fabric Fixative

Converts paint into fabric paint when added to any Derivan acrylic paint, which is then wash-proof upon heat fixing. 500ml.

SM.22 Derivan Print Paste

Extra thick medium which dyes can be added to for special one-off colours for fine art prints. 1 litre.

screen inks - speedball

S250.00 Speedball Editioning Inks - Water-based

Considered to be the world's No. 1 quality screen ink, by leading European workshops, based on pigment content and density. These inks have no Australian equivalent constituting stand-alone quality, with an almost odourless base of quality acrylic containing no white spirit.

Available in small (8oz) and large (32oz) tubs.

8oz tubs

S250.09	Black
S250.10	Orange
S250.11	Mid Yellow
S250.12	Mid Red
S250.14	Dark Red
S250.15	White
S250.42	Extender
S250.16	Peacock Blue
S250.17	Emerald Green
S250.18	Process Yellow
S250.19	Process Magenta
S250.20	Fire Red
S250.21	Ultramarine Blue
S250.22	Process Blue
S250.23	Dark Blue
S250.24	Silver
S250.25	Primrose Yellow
S250.26	Gold
S250.29	Violet
S250.27	Extender

32oz tubs

S250.091	Black
S250.101	Orange
S250.111	Mid Yellow
S250.121	Mid Red
S250.141	Dark Red
S250.151	White
S250.421	Extender
S250.161	Peacock Blue
S250.171	Emerald Green
S250.181	Process Yellow
S250.191	Process Magenta
S250.201	Fire Red
S250.211	Ultramarine Blue
S250.221	Process Blue
S250.231	Dark Blue
S250.241	Silver
S250.251	Primrose Yellow
S250.261	Gold
S250.291	Violet
S250.271	Extender

S240.09 Speedball Opaque Screen Inks

These new Speedball inks have added opaque iridescent pigment particles added to the emulsion which change the characteristics of the inks to give dense cover over dark textiles and black card/paper, drying to a satin finish. These inks are also quite stiff, so can easily be applied directly from a paint brush/palette knife for direct colour application to T-shirts via a stencil applied using Lazertran Silk iron-on photo stencil process. (Cat No E028).

The inks come in the following colours (*see colour charts at www.e-artstore.net*).

Silver, Gold, Pearl Black, Pearl White, Emerald, Sherbert (gold-yellow), Citron (pale yellow), Amethyst dark blue), Topaz (mid blue), Raspberry (mid red). 250ml pot.



S240.09

screen printing pastes and bases

S256 Lascaux Screen Base

Thick, very slow drying print paste. Add pigments or liquid pigment to make your own screen inks.

S256.0	500ml
S256.1	1000ml
S256.2	5000ml

S440 Tri Art Screen Inks - Print Paste

Made by adding a slow satin drying screen paste with small pots of liquid colour. These are available in a staggering colour range of 113 colours including 15 iridescents with Mother of Pearl and Liquid Mirror.

15 Yellows, 22 Reds, 14 Blues, 12 Greens, 6 Browns, 2 Greys. (See colour charts on web page for actual colours).

For rough mixing just add one small bottle to 500ml of paste. Reduce or increase pigment content as required.

S440.16	TriArt 500ml Print Paste
S2440.17	TriArt 1000ml Print Paste

screen printing - riso print gocco process

S256.00 Riso Print Gocco

Easy screen printing the Japanese way (*see www.nehoc.com.au for details*). Make stencils with special mesh coated with rosin, which makes a pinhole adjacent to a photocopy toner dot when flashed with their special bulbs. Perfect for DIY stationary and invitations for exhibition openings, weddings and parties.

S256.01 Riso A-5 Printing Kit

S256.02 Riso Pack x 10 Bulbs

S256.03 Riso Correction Fluid

15ml.

S256.06 Riso Plastic Frames

S256.06 A-5

S256.07 A-4

S256.08 Riso Oil-based Inks

Colours available are White, Blue, Red, Black, Gold, Orange, Yellow, Green, Silver. 40cc. Priced per tube.

S256.09 Riso Clean-Up Solution

15ml.

S256.04 Riso Screen Photo Mesh

S256.04 30cm x 1 metre

S256.05 30 cms x 5 metre

screen printing sundries

Using Oil-Based Screen Inks

In the US, there are still many fine art printmakers still wishing to screen print with high resolution fine screens and fade-resistant oil-based inks. These inks are fantastic in that the process eliminates anxiety about ink drying off in the screen mesh.

Using a spatula, simply mix one tube of Faust 100ml linseed oil-based ink with 250ml Faust oil-based screen extender to produce the final screen ink. This is best suited when screen printing onto 100% cotton printmaking papers with excellent registration characteristics, since it does not have all of the water based problems of expansion and contraction warping associated with water or acrylic-based screen inks. Clean up with safflower oil and Preen.

S256.10 Faust Screen Oil-Based Extender

250 ml.

S207.01 Fotec Universal Gel Screen Stripper

1 litre.

S 204.06 Haze Remover - American Eagle

1 litre.

S 200.5 Fotec Green Lacquer Sheets

Hand cutting. 75 x 100cm.

S197.01 Aluminium Scoop Coaters

Welded ends for maximum durability and long life. Use for fast application of screen fillers and photo emulsions for a perfect even skin over the mesh. Excess can be returned to container.

S197.01 28cm wide

S197.02 38cm wide

S197.03 53cm wide

S212.01 Screen Clamps - NWPS

Suitable for school use. Plated steel - inexpensive. Measure 50mm wide x 3mm thick. Sold per pair.



S212.01

S212.03 Screen Hinges - Speedball

Removeable pin screen hinges for fast screen removal when cleaning and coating. Sold per pack.



S212.03

S212.04 Jiffy Clamps - American

The world's best professional quality screen clamps with an 'in-cast' large hardened pin upon which the hinges move and which guarantees no screen movement during printing colour to colour, usually associated in the most exacting registrations. Sold per pair.



S212.04

S210.50 Brown Paper Gum Tape

48cm wide.

S210.51 Masking Tape

1" wide.

S215.09 Pocket Stencil Cutter - HFAW

Click down and the blade retracts in the same way as a biro into a pen type holder.



S215.09

S215.03 Stencil Knife - Small

Economy.

E087.07 Craft Knife Cutter - Grifhold

Aluminium-handled knife comes with an inexpensive No. 7 stencil cutting blade.



E087.07

E087.08 Stencil Cutting Blades (5)

Replacement blades for above knife.

S215.06 Cutting Knife - Swivel

Economy.

E087.48 Swivel Cutting Blades

Spare blades for above knife.

E087.79 Swivel Cutter - Grifhold

Blade set in nylon bearing turns automatically as cutting progresses along curves. For paper and cut film stencils.



E087.79

E087.48 Swivel Cutting Blades (2)

Replacement blades for above knife.

E058.10 Deluxe Cutter - Grifhold

No 24. Heavy duty resharpenable hardened steel blade..

S215.09 Acetate Stencil - Extra Thin

Easy cutting thin strong plastic sheet for hand-cut screen stencils. 630 x 1000mm.

S300 Blueprint Photographic Process

This inexpensive and non-toxic process involves placing pictures and other objects, such as flowers and lace, on to the specially treated 'Blueprint' fabric. This is then placed briefly in bright sunlight, rinsed in cold water, and the result is a clear image of the chosen design.

S300.01 Sun Fun Blue Square 6x6" (5)

S300.02 Sun Fun Blue Square 8.5x8.5" (5)



S325.00 Print Drying Racks

For drying prints. Measures 70x100cm.

For more racks, see Presses and Equipment section

NOTES