

relief printing



Product Listing 2010

printing plates

R161.20 Lino - Silk Cut

Grey lino known as silk cut, has been specially made for artists. It is softer and less dense than the traditional brown lino.

R161.13	150x150 (6x6")
R161.20	300x300 (12x12")*
R161.21	300x450 (12x18")
R161.22	450x450 (18x18")
R161.23	450x610 (18x24")
R161.24	610x610 (24x24")

*10% discount pack 50



R161.20

R161.01 Lino - Premium Quality

German. Hard and clean cutting lino, which is denser and less crumbly than silk cut, but is a more expensive product.

R161.01	300 x 300mm (12x12")
R161.02	Roll 1 x 2 metres

R161.25 Lino Roll - Silk Cut

Measures 1 x 1.8 metres.

S300 Blueprint Photographic Process

This inexpensive and non-toxic process involves placing pictures and other objects, such as flowers and lace, on to the specially treated 'Blueprint' fabric. This is then placed briefly in bright sunlight, rinsed in cold water, and the result is a clear image of the chosen design. Price is per sheet.

S300.01	Sun Fun Blue Square 6x6" (5)
S300.02	Sun Fun Blue Square 8.5x8.5" (10)



S300

relief plates - solar (economy)

E002.60 Polymer Plate - Pre-sensitized (Gold)

An acid-free relief printing process for those sensitive to dangerous chemicals. Made from steel-backed photosensitive polymer which is water-soluble. Exposure to UV light makes these areas waterproof. Developing the plate in warm water washes out unexposed areas to create an etching or relief plate. This process gives excellent ink receptivity. Develop quickly using a brush to remove the unexposed portion. Dry, then harden the plate in sunlight. Expose photocopied sheet or inkjet positive to plates in sunlight for 2-3 minutes (allow 10% extra time for cloudy days), then wash out unexposed areas in water bath. (Data sheet available).

E002.60	610x430
E002.61	305x430
E002.62	215x305
E002.63	150x215



E002.60

relief printing

R161.30 Solar Printing Exposure Frame

Spring-loaded portable exposure frame for solar printing in sunlight or under a UV lamp. Comes complete with black plastic 'zip-up' darkroom carry bag.

printing plates and blocks - general

R161.30 Vinyl Relief Plates

Soft double-sided black core plates consistently cut fluidly and easily with a minimum of effort and print substantially clearer than lino. The design is progressively revealed as the plate is cut into.

R161.32 200x150mm

R161.30 200x300mm

R161.31 300x400mm

*10% discount pack 10



R161.30

R171.30 Polyprint Plates - Speedball

Mountable self-adhesive foam sheets, 230x300mm (9x12") which can be cut down. Use with ball to draw into plate. Pack of 12 sheets.

R171.24 Speedy Cut Blocks

Extra soft thick blocks that can be cut into like butter. Excellent for the physically impaired and the aged where hand strength and control are limited. Good for inkjet image transfers and if lightly cut, can be used both sides. Photocopy design and iron onto Speedy Cut blocks for a cutting guide.

R171.24 76x100mm - single

R171.25 100x150mm - single

R171.26 150x280mm - single

R161.51 Wood Block - Thick (Japanese)

Smooth-surfaced blocks of Japanese magnolia wood. Cuts across the grain easily. Use both sides for economy. 10mm.

R161.51 100x150mm

R161.53 150x200mm

R161.52 200x300mm



R161.51

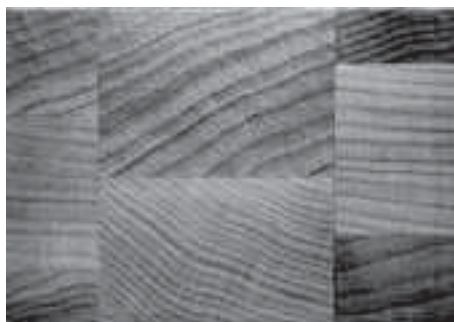
R164.00 Engraving Block - End Grain Maple

Small 'typehigh' pieces of American maple bonded together to form a block. One surface is highly polished with the back machined parallel. The surface can be machined off in a sanding machine by a wood furniture manufacturer for re-use and the block may be used up to 20 times, depending on the depth of the engraving.

R164.01 4x5"

R164.02 5x7"

R164.03 8x10"



R164.01

R165.00 Engraving Block - End Grain Birch

Harder than maple, these end-grain blocks are more expensive, but not as costly as boxwood, which is currently difficult to source.

R163.07 150x200

R163.06 100x150

R163.08 75x100



R165

R166 Japanese Ash Plywood Plates

These premium 4mm quality plates may be cut from any direction without splintering. Fine-grained ash cuts smoothly, leaving a sharp line and excellent potential cross-hatching areas.

R166.1 225x300mm (4mm)

R166.2 260x360mm (4mm)

R166.3 300x450 (4mm)

R166.4 450x600x6mm (5.5mm)

R165.04 Customwood Blocks

Measuring 9mm thick, these can be cut both sides or used for mounting lino plates.

R165.04 250x300mm (10x12")

R165.05 300x300mm (12x12")

tools - lino and wood cutters

R168.04 Lino Tools - 3 piece

Small secondary class set in plastic pouch for wood as well as lino, soapstone, etc. Set has two U's and a V cutter.



R168.04

R168.01 Lino Tools - 5 piece

Best quality in the inexpensive pencil type cutters. Comes with sharpening stone. Suitable for lino/wood. Japanese-made with hardened steel tips.



R168.01

R168.02 Lino Tools - 6 piece

Same as above set, but comes with stone and baren.



R168.02

R168.03 Lino Tools - 12 piece

Large set for wood cutting, soapstone carving, etc. as well as lino. Set has a variety of cutters only.



R168.03

R170.02 Cutter Set - German 3-piece

Wooden handles. Comes in carry box.



R170.02

CS511 Cutters - Economy

Hardened steel with wooden handles. Use for lino, plaster and soapstone.

- CS511 3-piece set
- CS512 6-piece set
- CS513 8-piece set
- CS514 12-piece set

R171.00 Lino Tools - Speedball Cutters

Good quality hardened steel nib-type lino cutters that fit into a steel chuck and can be quickly locked in. The plastic handles are hollow and can be used to store cutters when not in use. Both handles and nibs may be purchased individually.

- R171.01 No. 1 - Small V-Cutter
- R171.02 No. 2 - Medium V-Cutter
- R171.03 No. 3 - Large V-Cutter
- R171.04 No. 4 - Small U-Cutter
- R171.05 No. 5 - Large U-Cutter
- R171.06 Knife Cutter Nib



R171.01



R171.06/R171.09

R171.07 Set of 5 Cutters/Handle - Speedball

R171.09 Box of 6 Assorted Cutter Nibs - Speedball

R171.21 Set 5 Zip Cutters/Handle - Speedball



R171.21

R171.08 Spare Handle - Speedball



R171.08

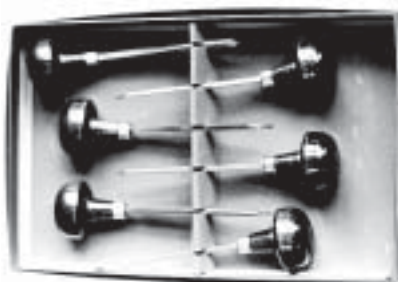
R171.20 Bench Hook/Ink Plate - Speedball

tools - lyons (boxed sets)

Manufactured in USA, these quality forged and hardened steel tools are available as boxed sets.

R172 Wood Engraving Tools - End-grain

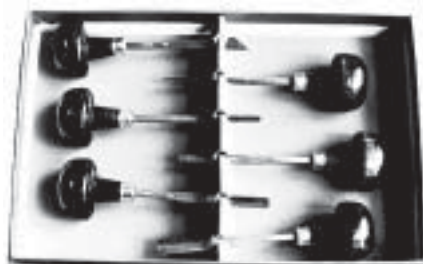
6-piece set made in USA by Lyons. The set of engraving tools with mushroom handles comprises a variety of scorpers, spitstickers, etc.



R172

R173 Lino Tools - Deluxe - 6-piece

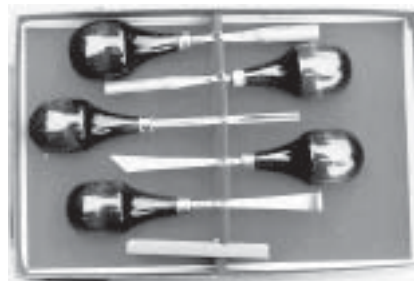
Set with mushroom handle. 3U, 3V tool ends made from drop forged quench and tempered alloy steel.



R173

R174 Lino Tools - Deluxe - 5-piece

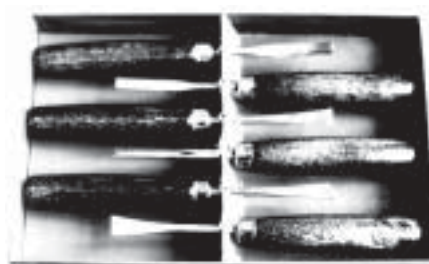
Includes double-ended sharpening stone for curved tools. Comprises 3U and 2V end sections with blades made from drop-forged hardened alloy steel. The handle is larger than the traditional mushroomed handle and is easier to hold in larger hands.



R174

R175 Wood Tools - 6-piece

Hand or mallet type handle for wood and lino cutting as well as plaster, sculpture, soapstone work, etc. Comprises 2V, and 3U end tools. The shaft in these sets is understandably much longer as is the wooden handle.



R175

tools - individual

R176.00 Tools - Individual Mushroom Handled

Made of forged hardened steel. Same tools as above, but may be purchased as individual tools.

R176.01B V-Form - Medium

R176.02A U/V-Form - Small

R176.02B U-Form - Medium

R176.02C U-Form - Large

R176.02D U-Form - Largest



R176.02B

R176.01D V-Gouge - Large

Wooden-handled. American.



R176.10

- E085.01 Multiple Line Graver - 3mm** (thin)
(fine, medium, coarse)



E085.01

- E085.02 Multi-Line Graver - 5mm** (medium)

- R176.04 Scorper** (thin parallel-sided graver, flat sides, rounded bottom)

- R176.05 Spitssticker** (thin pointed graver with flat sides - 1-12)



R176.05

- R176.05B Elliptical Tint Tool** (thin pointed graver with curved sides - 1-12)



R176.05B

- E083A Burin Graver - Standard** (small, medium, large, extra large)

- E083B Burin Graver - Lozenge** (medium size only)



E083B

E084.01 Half-Tone Rake

Double-ended 'pull' action tool, producing a series of parallel lines. Available in fine or coarse.

R176.08 Traditional Relief Knife

Hold vertically, the Japanese way, pulling the tool towards the body, with the bottom of the blade held by the left hand small finger base. Tilt the flat blade like a rudder with the right hand to change the angle of the cut for the finest cutting control.



R176.08

european wood-carving tools - pfeil

Made in Switzerland by Pfeil. Premium quality hardened tools with large mushroom or long embedded shank mallet-type handles. These tools come straight from the factory.

RR167.231 Pfeil Micro 'V' - 1mm

Swiss Micro-'V' form 1mm, with mushroom-style handle.

167.23 Pfeil Tools - Mushroom Handle

Swiss-manufactured tools with mushroom-style handle.

R167.23 Micro-V-Form - 1mm

R161.22 Medium V-Form - Small 'U'

R161.24 U-Form - Large

R167.27 Pfeil Tools - 'V' Form, Long Handle

Swiss-manufactured tools with mallet-style handle.

R167.27 Small 'V' - 2mm

R161.26 Medium 'V' - 6mm

R161.25 Large 'V' - 8mm

R167.27 C Tools - 'U' Form, Long Handle

Swiss-manufactured tools with mallet-style handle.

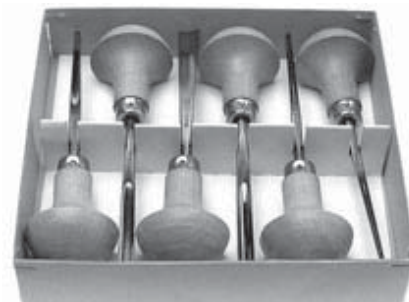
R167.29 Small 'U' - 5mm

R161.28 Medium 'U' - 10mm

R161.30 Large 'U' - 14mm

R167.21 Pfeil Boxed Cutter Set

Superb Swiss quality mushroom-handled set of both U and V cutting tools, sharpened and leather-honed. Ready to use.



R167.21

europaean wood-carving tools - two cherry

Made in Germany, German carving tools have long been renowned for tool steel and wood-working tools. Two Cherry tools are possibly Germany's oldest family-owned handtool company with the distinctive 'Two Cherry' decals on the handle and polished mirror finish steel shafts. They make their own handles and specify the exact secret composition of their unique alloy steel hardened to Rockwell 61 hardness. Two Cherry tools come in two styles; a small pear-shaped handle, and a long handle where the hex-shaped steel shank is pushed into the wooden handle. Ultra-small tools are called 'Microtools'.

C200.28 Two Cherry - Straight 'V' Form

German-manufactured tools.

C200.28	1.5mm (Microtool)
C200.29	2mm
C200.30	4mm
C200.31	6mm
C200.32	8mm
C200.33	10mm

C200.20 Two Cherry - Curved 'V' Form

German-manufactured tools.

C200.20	1.5mm (Microtool)
C200.34	2mm
C200.35	4mm
C200.36	6mm
C200.37	8mm

C200.23 Two Cherry - Straight 'U' Form

German-manufactured tools.

C200.23	0.5mm (Microtool)
C200.24	1mm (Microtool)
C200.38	2mm
C200.39	4mm
C200.40	6mm
C200.41	8mm
C200.42	10mm

C200.21 Two Cherry - Curved 'U' Form

German-manufactured tools.

C200.21	0.5mm (Microtool)
C200.22	1mm (Microtool)
C200.43	2mm
C200.44	4mm
C200.45	6mm
C200.46	8mm

C200.48 Two Cherry - Gouge

20mm long-handled mallet-type gouge.

C200.181 Two Cherry - Medium Tool

80mm tool with long mallet-type handle.

C200.18 Two Cherry - Large Tool

900mm tool with long mallet-type handle.

C200.50 Two Cherry 6-piece Set - Cardboard

Mixed 'U' and 'V' tools in a cardboard box.

C200.51 Two Cherry 6-piece Set - Wooden

Mixed 'U' and 'V' tools in a wooden box.

C200.52 Two Cherry Sharpening Set

University sharpening unit with four wheels for sharpening and finishing all carving tools. 240volt. German manufacture.

japanese carving tools - traditional

These tools are unique in construction, being composed from a lamination of thick soft pure iron with a thin layer of exceptional hardness carbide which forms the cutting edge. This carbide layer is in excess of 75 Rockwell C in hardness and translates to much less sharpening required. This age-old technique was perfected in Japan in making Samurai swords. During WWII, there were recorded instances of Samurai swords slicing hardened steel rifles in half.

These tools are made by an individual tool maker who marks his name on each tool handle. The handles on each tool open up for tool stick-out adjustment and all have brass ferrules.

R167.50 Sankakuto - 'V' Form Gouge

Japanese-manufactured tools.

R167.50	1mm
R167.51	1.5mm
R167.53	2mm
R167.54	3mm
R167.55	4.5mm
R167.56	6mm

R167.58 Komasuki - 'U' Form Gouge

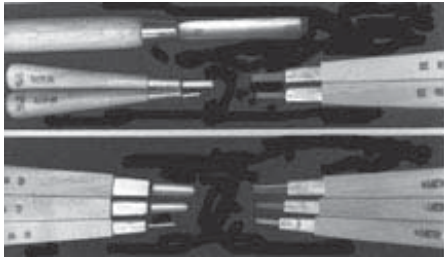
Japanese-manufactured tools.

R167.58	1mm
R167.7	1mm
R167.59	1.5mm
R167.60	2mm
R167.62	3mm
R167.63	4.5mm
R167.64	6mm
R167.65	7.5mm

R167.58 Hangito - Angled Knife

Japanese-manufactured tools.

R167.70	1.5mm
R167.71	2mm
R167.72	3mm



R167

R167.58 Aisuki - Angled Knife

Companion to the Hangito knife is the flat Aisuki tool, a bull-nosed flat tool of medium size with a slightly rounded nose. For centuries, Europeans laboriously cut with gouges; the Japanese, in contrast, defined the edges of the design with the Hangito, then quickly cleaned the areas out with the Aisuki and larger Hianami flat chisel.

R167.73	3mm
R167.74	4.5mm

R167.76 Hianami - Flat Chisel

Use in combination with the Aisuki tool, described above. 25mm wide.

R167.80 Maunomi - Large Gouge

For deep cutting of large sections, the Japanese have very large gouges used with a mallet. These gouges have thick cherry wood handles and the tops are reinforced with a steel ring to prevent the wood splitting over a lifetime of use.

R167.80	12mm Maunomi
R167.81	15mm Maunomi

block printing inks - water-washup**R187.040 Printing Inks - Heidelberg**

Water-washup, oil-based inks, made from pigmented linseed oil and inoculated with water-soluble vegetable oil. For fast cleanup, simply paint any liquid washing detergent onto the rollers, lino and other tools with a varnish brush and run under hot tap water to clean. Note: These inks are now frequently used for etching as well; just add a small dab of EasyWipe.

150ml tubes

R187.041	Extender
R187.044	Cool Yellow
R187.046	Naphthol Red
R187.042	Rubine Red
R187.047	Prussian Blue
R187.048	Yellow Ochre
R187.043	Thalo Green
R187.054	Violet
R187.049	Dark Brown (Sepia)
R187.050	Opaque White
R187.051	Black
R187.052A	Azure Blue
R187.053	Golden Yellow

**250ml tins**

R187.055	Black
R187.056	White
R187.057	Transparent (Extender)
R187.058	Yellow Ochre
R187.059	Ultramarine Blue
R187.061	Prussian Blue
R187.062	Cool Yellow Light
R187.063	Naphthol Red
R187.064	Rubine Red
R187.065	Pthalo Green
R187.066	Golden Yellow
R187.067	Sepia
R187.068	Violet

500ml tins

R187.0551	Black
------------------	-------

R188 Printing Inks - Graphics

Best quality grind. Roll up like oil (not acrylic base). Wash up with cold soapy water. 1lb tins.

R188.010	Extender
R188.011	Lamp Black
R188.011B	Black (1659)
R188.012	Sunburst Red
R188.012B	Carnation Red
R188.012C	Crimson Red
R188.0131	Prussian Blue
R188.013	Cobalt Blue
R188.0132	Teal Blue
R188.014	Yellow
R188.015	Green
R188.016	Orange
R188.017	Dark Brown
R188.018	Purple
R188.019	White
R188.010A	Vehicle* (1 pint tin)
R188.010B	Vehicle (100ml bottle)

**Relatively inexpensive, this is the loose-bodied vehicle this ink is made from and is useful to have on hand for thinning down the ink and making it more liquid. It is essential to remember that water must never be added to these inks since it will render them unusable.*

R188.0020 Printing Inks - Graphics

Water-washup. 4oz tubes.

R188.021	Lamp Black
R188.022B	Black (1659)
R188.022	Sunburst Red
R188.023	White
R188.024	Yellow
R188.025	Green
R188.026	Orange
R188.027	Dark Brown
R188.028	Purple
R188.029	Extender
R188.02C	Carnation Red
R188.030	Blue (Cobalt Hue)
R188.03D	Prussian Blue

R185 Block Printing Inks - Derivan - Water-based

Australia's best-selling relief ink for wood, cardboard and lino printing. Roll on thickly for best results on lino. Water-washup. 250ml.

R185.01	Black
R185.02	White
R185.03	Yellow
R185.04	Phthalo Blue
R185.05	Ultra Blue
R185.06	Red
R185.07	Orange
R185.08	Purple
R185.09	Deep Green
R185.10	Brown

R188.032 Printing Inks - Speedball, Water-based

The large tubes offer a no-waste option. Only squeeze out the amount needed for rolling up. Note that a half-used tube will last for years. For maximum ink recovery, use HFA tube squeezers (A511.56). Available in a large range of colours which includes silver and gold.



R188.038

150ml tubes

R188.033	Black
R188.034	White
R188.035	Mid Red
R188.036	Light Red
R188.037	Blue
R188.038	Turquoise
R188.039	Light Yellow
R188.040	Dark Yellow
R188.041	Brown
R188.042	Orange
R188.043	Violet (145ml)
R188.044	Magenta
R188.045	Gold
R188.046	Silver
R188.047	Clear Retarder (8oz)
R188.048	Green

500g

R188.0321	Black
-----------	-------

R188.100 Printing Inks - Speedball, Water-based 75ml tubes

All above colours available. Per tube.

R188.086 Printing Inks - Speedball, Water-based 37ml tubes

All above colours available. Per tube.

block printing inks - oil-based

R188.100 Printing Inks - Speedball, Oil-based 75ml tubes

R188.101	Black
R188.102	Red
R188.103	Blue
R188.104	White
R188.105	Green
R188.106	Yellow
R188.107	Brown

R188.120 Printing Inks - Speedball, Oil-based 37ml tubes

All above colours available. Per tube.

Note: For years, many schools have used the convenient Faust 100ml tubes of etching ink for lino and Lithosketch printing; just add 10% of our drier compound extender, R188.13, available in 250ml tins.



E130

R188.13 Sennelier Cobalt Driers

These driers greatly hasten the drying of oil-based inks; just add a few drops to your ink mix on the slab. Available in 60ml bottle.

R186 Woodblock Editioning Inks, NWPS

These double-pigmented dense inks are the ultimate in colour density with a very dense velvet black. They contain no driers and are linseed oil-based, made by triple-roll milling. For multi colour, add additional driers, such as Sennelier Cobalt driers (see R188.13).

R186.01	Black - 250g
R186.011	Black - 500g
R186.02	Dark Blue - 250g
R186.03	Ultramarine - 250g
R186.04	Thalo Blue - 250g
R186.05	Emerald Green - 250g
R186.06	Orange - 250g
R186.07	Poppy Red - 250g
R186.08	Crimson - 250g
R186.081	Warm Red - 250g
R186.09	Quinacridone Red - 250g
R186.10	Violet - 250g
R186.11	Transparent White - 250g
R186.12	Opaque White - 250g
R186.13	Primrose Yellow - 250g
R186.14	Golden Yellow - 250g
R186.15	Graphite Black - 250g

R189 Printing Inks - Graphics

Traditional linseed oil base with artist quality ground pigments. 1lb tins.

R189.010	Brown (Sepia)
R189.011	Black (Carbon)
R189.019	Warm Black (Bond)
R189.012	Milori Blue (Prussian)
R189.0121	Cobalt Blue
R189.013	Sunburst Red
R189.013B	Cardinal Red
R189.014	Lemon Yellow
R189.0141	Diarylide Yellow
R189.015	Green
R189.016	Orange
R189.017	Purple
R189.018	White
R189.017E	Extender

**R189.020 Printing Inks - Graphics**

Oil-based. 4oz tubes.

R189.021	Black
R189.0210	White
R189.022	Milori Blue
R189.023	Sunburst Red
R189.031	Cardinal Red
R189.024	Lemon Yellow
R189.0241	Diarylide Yellow
R189.025	Green
R189.026	Orange
R189.027	Dark Brown
R189.028	Purple
R189.029	Extender

R190 Lino Inks, Heidelberg

Oil-based ink used by schools for years for linocuts, etc. Synthetic base, containing driers. Safflower oil wash up. Pantone colours. 1kg tins.

R190.01	Black
R190.02	Warm Red
R190.031	Pantone Red 185
R190.05	Green
R190.07	Pantone Purple
R190.08	Brown
R190.09	Opaque White
R190.10	Extender
R190.11	Process Cyan
R190.12	Process Magenta
R190.18	Pantone Yellow
R190.20	Reflex Blue

relief printing sundries

Arkansas stone is the finest natural occurring stone for sharpening. It is a finishing stone to be used after first rough sharpening, with a normal silicon carbide carpenter's stone. For best results, use with neatsfoot oil. Also see the smaller Scotch snakestone slip. (E012).

R177 Arkansas Slip - Medium

Small, medium grade in leather wallet.



R177

R177.2 Arkansas Slip - Hard

Small, hard grade in leather wallet.

R177.1 Arkansas Slip - V and U

Shaped edges.

R177.0 Arkansas Slip - 4-piece Set

Set of slips with varied angles.

R178 Arkansas Sharpening Slip - Giant

'V' and 'U' slip; double-edged. Tapered for multi-use.

R178.01 Arkansas Sharpening Slab - Small

Essential for all engraving tools - comes in wooden box. 75x25x6mm.



R178.01

R180.012 India Stone - Round

Large round double-sided stone for medium and fine first grinding of all tools. Lubricate this stone with kerosene and finally lap in to final sharpness with any natural occurring stone, ie. Arkansas.



R180.012

R180.02 Pocket Sharpening Slip

Inexpensive silica carbide sharpening stone for fast shaping of tool end - use with kerosene.



R180.02

R180.01 India Stone - Small

For fine first grinding of all tools. 100x25x6mm.

R178.04 Honing Oil

Essential for sharpening. 180ml.

R178.03 Honing Paste

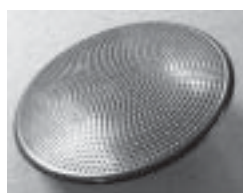
Ceramic oxide paste. 2oz container.

R180.03 Leather Hone

For final polishing of all steel cutters. 250x70mm.

R161.02 Baren - Plastic

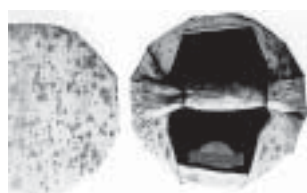
120mm diameter. 2mm beads.



R161.02

R181.01 Baren - Large

Traditional bamboo. 100mm (4") diameter for school and artist use. Economical.



R181.01

R181.05 Baren - Speedball

Cast metal baren with wooden handle and low friction teflon padded skin. American.



R180.05

R181.04 Red Baren - Speedball

Economy version of above (no covering). American.

181.03 Baren - Ball-bearing, Hand-made

Japanese ball-bearing baren, 130mm diameter, with 1500 balls which rotate.

R181.021 Baren - Ball-bearing, Swivel

Japanese baren with 2mm diameter steel ball-bearings and soft padded, swivel edge.

R183 Tool Sharpening Jig

Holds tool at the correct angle as it rolls across the sharpening stone.



R183

R184 Crocker Sharpening Guide

Deluxe tool-holding sharpener. Adjusts in both directions for all face angles.

R167.77 Nikawa Sizing Sticks - Japanese

Sizing sticks for sizing of Japanese papers and pigment mixing for manufacture of traditional Japanese relief inks. Priced per stick.

R167.78 Iridescent Powder - Japanese

For mixing with inks. Small packs, 10g.

R167.79 Gofun Powder - Japanese

Traditional pigment used in woodblock prints, made from crushed oyster shells. Mix into paste and dry. May be burnished to a final lustre. Small packs, 10g.