

papers and books



Product Listing 2010

Note: (#) represents sheets per pack. Special discounts apply for full pack sales.

arches bfk rives - printmaking

P315 Rives Velin

Off-white, mould-made 100% cotton, lightly sized, excellent etching surface, soft.

- P315.02** 270gsm 75x105 (50)
- P315.03** 300gsm 80x120 (50)
- P315.04** 270gsm Grey 56x76 (100)
- P315.05** 280gsm Cream 76x111 (50)
- P315.06** 250gsm White 56x76 (100)
- P315.09** 300gsm roll 1.07x18mt
- P315.04A** 280gsm Tan 56x76 (50)
- P315.052** 280gsm Cream 56x76 (50)

P316 Velin Arches

This has a slight wove surface and a warm yellowish tone. Mould-made, 100% cotton and lightly sized.

- P316.01** 250gsm 56x76 (100)
- P316.11** 270gsm Off-White 56x76 (100)
- P316.02** 270gsm 75x105 (50)
- P316.03** 300gsm 80x120 (50)
- P316.04** 300gsm roll 1.07x18mt
- P316.06** 300gsm 56x76 (100)
- P316.07** 250gsm Black 76x111 (50)
- P316.10** 270gsm Cream 75x105 (50)
- P316.11** 250gsm Cream 56x76 (100)
- P318.00** Arches '88' 300g 56x76 (100) Unsized
- P316.03A** Plantine 310g 76x112 (25)



P320.03

arches - watercolour

The Arches Aquarelle series is made with four deckle edges in 100% rag. The papers are surface-sized for watercolour painting and come in Hot Pressed (HP) and Cold Pressed (CP).

- P319.01** HP 185gsm 56x76 (10)
- P319.02** HP 300gsm 56x76 (10)
- P320.01** CP 185gsm 56x76 (10)
- P320.02** CP 300gsm 56x76 (10)
- P320.05** CP 640gsm 56x76 (5)
- P320.11** 300gsm roll 1.13x9.5mt

fabriano - printmaking

The Italian company, Fabriano, have been papermakers since 1275 A.D.

Note: Fabriano Extra White is the same shade as Lana regular watercolour paper.

P322 Tiepolo

Warm white. Mould-made, 100% cotton. Superb etching paper, especially for deeply bitten plates. Also good for screen printing. Moderately sized for drawing and pastel.

- P322.01** 290gsm 70x100 (50)
- P322.02** 290gsm 56x76 (50)

P323 Rosapina Etching

Papers contain 60% cotton. Relatively unsized soft paper, particularly good for aquatint, screen printing and lithography. Excellent soft neutral student paper for submission prints. Neutral pH.

- P323.01** 285gsm White 70x100 (50)
- P323.02** 285gsm Buff 70x100 (50)
- P323.03** 220gsm White 70x100 (100)
- P323.04** 220gsm White 50x70 (100)

fabriano - watercolour

P325 Fabriano 5

Papers contain 50% rag, are surface-sized and used for both silkscreen and litho printing. The surface of the satine paper has a light drawing tooth and is off-white.

P325.03 HP 300gsm 70x100 (50)

P325.04 HP 300gsm 50x70 (50)

P324.01 Fabriano Roma

100% cotton, handmade. 130gsm. 48x66cm. Off-white.



P324.01

P320.21 Fabriano Watercolour

Cold-pressed cellulose.

P320.21 200gsm 50x70 (50)

P320.22 300gsm Roll 1.5x10 metres

P326 Fabriano Artístico

Popular watercolour paper. Warm white, and surface-sized, it is 100% rag and is Fabriano's premium 'mould-made' paper. It comes in three surface finishes - Hot Pressed (S), Cold Pressed (GF), and Rough (GG).

P326.01 S 200gsm 56x76 (10)

P326.02 GF 200gsm 56x76 (10)

P326.03 GG 200gsm 56x76 (10)

P326.04 S 300gsm 56x76 (10)

P326.05 GF 300gsm 56x76 (10)

P326.06 GG 300gsm 56x76 (10)

P326.20 S 640gsm 56x76 (5)

P326.19 GF 640gsm 56x76 (5)

P326.21 GG 640gsm 56x76 (5)

P326.07 Fabriano Artístico - Extra White

P326.07 GF 300gsm 56x76 (10)

P326.08 S 300gsm 56x76 (10)

P326.20 S 640gsm 56x76 (5)

P326 Fabriano Watercolour Rolls

Artístico rolls. 300gsm.

P326.23 CP 1.5 metres x 10 metres

P326.24 HP 1.5 metres x 10 metres

watercolour - economy

P324 HFAW Watercolour

A fully sized, good quality 100% rag watercolour paper from America, very low in price. It has a cold pressed surface, is sold in bulk throughout USA and Canada, and is made by a highly respected mill. Packs of 50 sheets.

P324.20 185gsm CP 56x76 (50)

P324.20A 300gsm HP 56x76 (50)

P324.221 300gsm CP 56x76 (50)

P324.22A HFAW Watercolour - Large

Economy priced 100% cotton, 400gsm. CP. 76x112cm.

lana papers

This small independent old French mill produces excellent papers similar to Arches Rives, but at a lower price. Like Arches, the paper is heavily sized. The mill is renowned for quality control and French sizing.

P330.01 Lana Royal - Printmaking

This paper is often selected for its pleasant off-white warm colour. It is relatively lightly sized for a printmaking paper, and similar to Hahnemühle except for it being 100% cotton, and Hot Pressed like Arches 88. Deckle-edged.

P330.01 HP 250gsm 78x106 (50)

P330.01A HP 250gsm 53x78 (50)

P330.01C HP 300gsm 78x106 (50)

P330.02 Lana Aquarelle - Watercolour

These are stocked in three surfaces - Satine (HP) and Fin (CP) and Rough (R). The tub-sized watercolour papers are 100% rag with four deckle edges. The papers are medium white in colour, halfway between Arches and Fabriano Bright White.

P330.02 185gsm Satine 56x76 (10)

P330.03 185gsm Fin 56x76 (10)

P330.031 185gsm Rough 56x76 (10)

P330.04 300gsm Satine 56x76 (10)

P330.05 300gsm Fin 56x76 (10)

P330.042 300gsm Rough 56x76 (10)

P330.05 640gsm Fin 56x76 (10)

P330.051 640gsm Satine 56x76 (5)

P330.052 640gsm Rough 56x76 (10)

P330.07 Lana Aquarelle - Oversize

P330.07 640gsm Fin 100x150 (5)

P330.08 640gsm Satine 100x150 (5)

P330.12 Lana Aquarelle - Rolls

10 metre rolls of 100% cotton, 1.3 metres wide, wound on to a large diameter core for less paper curl.

P330.12 CP 300gsm 1300x10 metres

P330.14 HP 300gsm 1300x10 metres

P330.13 CP 640gsm 1300x10 metres

P330.15 HP 640gsm 1300x10 metres

P330.16 Lana Watercolour - 25% cotton

Cold Pressed surface in a warm white, and the same stock used in Lana Economy watercolour pads and blocks. 300gsm, 50x65cm (25).

garza papers

A new mill in Spain is manufacturing paper in the traditional way, where it is Hollander-beaten slowly to chop the fibres. The papers are hand-made with a mould and deckle, then pressed between woollen blankets and loft dried. They are gelatine-sized on both surfaces for watercolour.



P321.20

P321.20 Garza - Watercolour

300gms

- P321.21** 21x30cm (10)
P321.22 30x40cm (10)
P321.23 56x76cm (10)
P321.24 70x100cm (5)

600gms

- P321.28** 35x50cm (5)
P321.29 56x76cm (5)
P321.30 70x100cm (5)
P321.31 100x150cm (5)

indian handmade papers*Khadi Papers (Khadi means cotton)*

Indian villages have been making papers, blending traditional and Western methods, since the 1940s, continuing a 500 year-old tradition. Only a few make artist quality papers and these villages have a workforce of skilled papermakers. Papers have been internally and surface gelatine sized as is European practice, and are made from the highest quality cotton in the form of tailor's trimmings.

P332.03 Natural Off-White Papers

- P333.03** 125gsm HP 56x76 (25)
P333.04 150gsm CP 56x76 (25)
P332.09 210gsm CP 56x76 (25)
P332.11 650gsm CP 56x76 (25)

P332.12 Small Off-White Sheets

Sold per pack.

- P332.20** A6 150gsm CP (25)
P332.19 A5 150gsm CP (25)
P332.16 A4 150gsm CP (25)
P332.12 A3 210gsm CP (25)
P332.15 350mm square 320gsm (25)
P332.17 A6 640gsm (25)
P332.18 A5 640gsm (25)



P332.18

P332.21 Mixed Fibre Rag Papers

A range of papers based on a 190gsm rag paper, but just before making, an amount of fibre is added to the stock to give the paper a unique style. The size is 56x76cm and the papers have been hot pressed and surface-sized to enable the papers to be used for calligraphy, etching and card-making.

- P332.21** Gunny (Jute) 190g HP 56x76 (25)
P332.22 Rice Straw 190g HP 56x76 (25)
P332.24 Wool Fibres 190g HP 56x76 (25)



P332.24



P332.22

heidelberg printmaking papers**P335 Schut Etching (Dutch Etching)**

These papers have been especially tailored to Australian specifications by the Schut paper mill in Holland. Sited over an old spring, this 300-year-old mill is Holland's oldest, and the main mill manufacturing quality rag papers for artists. This paper has been made especially for editioners and etchers. It is off-white in shade and 100% rag neutral pH. The heavier weight gives it a measure of buckle resistance upon framing, especially important in etchings. A great value rag paper that even students can afford.

- P335.044** 300gsm 76x112 (50)
P335.045 300gsm 56x76 (50)
P335.10 250gsm 56x76 (50)
P335.101 250gsm 76x112 (50)
P335.102 250gsm 70x100 (50)

P335.07 Schut Copperplate

One of the best-selling student neutral pH rag papers. Off-white in colour, but with cut edges and containing 50% rag, it is excellently priced and still mould-made without marked directionality.

- P335.07** 270gsm 50x65cm (50)
P335.071 270gsm 65x100cm (50)

P327 Stonehenge

These 100% cotton papers are made in USA. Cotton linters are all acid-free and offer excellent prices for students of printmaking and drawing. The relatively smooth surface makes these papers ideal for etching and relief printing, screen-printing and monoprinting, as well as mixed media work and drawing. Available in several weights and colours.

- P327.01** 240gsm 56x76 White
P327.03 240gsm 56x76 Grey
P327.031 240gsm 56x76 Black
P327.02 240gsm 76x112 White
P327.04 300gsm 56x76 White
P327.041 300gsm 76x112 White

bookmaking papers

For artists making their own books.

P345.03 Bookmaking Papers - Hahnemuhle

P345.06 Bugraoff/wh 150gsm 86x107cm (50)

P345.08 Sum-E 80gsm 50x65cm (50)

german printmaking papers

P331.20 Zerkall Papers

Zerkall is a German paper, and both Zerkall and Hahnemuhle have similar characteristics with a soft 'waterleaf' feel, making them preferred by many as the most sensitive paper for aquatint printing. Additionally, the Zerkall mill is renowned for its soft lightweight bookmaking papers in both 120gsm and 145gsm. (the 120gsm weight has unusual irregular laid lines, making the paper resemble a sheet of very old handmade paper).



P331 Zerkall Bond (Bookbinding/Relief)

P331.22 145gsm Wove 54x76 (100)

P331.31 120gsm Laid 53x76 (100)



P331.31

P331 German Etching - Hahnemuhle Paper

This German paper has carved out a special niche in Australia, especially for aquatints. It contains no rag, being made from alfa cellulose (or synthetic cotton) and comes in warm white, creamish buff and bright white.

P331.10 105734 150g W/White 78x106 (50)

P331.11 105734 150g W/White 53x78 (50)

P331.07 105738 230g W/White 78x105 (50)

P331.08 105738 230g W/White 53x78 (50)

P331.03 105735 300g W/White 78x105 (50)

P331.04 105735 300g W/White 53x78 (50)

P331.12 105737 300g Cream 78x106 (50)

P331.06 105735 350g W/White 53x78 (50)

P331.05 105737 350g W/White 78x105 (50)

P331.14 300gsm Bright White 78x105 (50)

P331.15 300gsm Bright White 53x78 (50)

P331.021 German Etching, Oversize - Hahnemuhle

P331.021 300gsm Warm White 80x120 (50)

P331.023 300gsm Bright White Rag 80x120 (50)

P331.022 350gsm Bright White 80x120 (50)

P331.01 German Etching - Hahnemuhle Rolls

Available in rolls of 350gsm, measuring 114cmx20metres long. Warm white in colour.

P331.16 Watercolour, O'size - Hahnemuhle

Watercolour paper, 450gsm, 78x105cm. Wove surface.

etching papers - miscellaneous

P331.51 Canaletto Satine

An inexpensive drawing and/or watercolour paper made in Italy which contains 25% rag. An excellent paper for artists wanting large format drawing papers fitting a price bracket between cartridge and the more expensive papers. Hot pressed.

P331.51 160gsm 70x100 (100)

P331.52 300gsm 70x100 (100)

design papers - miscellaneous

Papers in this group are often used by graphic artists where paper is required to have good strength and a resistance to pilling when erasure and sanding are carried out. For these reasons, some silk screen printers use such a paper because it has cut edges and is highly sized with no ink absorption, giving a gloss to oil-based inks. Fabriano 4 is a white economical alternative to the German papers often selected.

P321 Fabriano 4

P321.02 220gsm HP 70x100 (100)

P321.03 220gsm HP 50x70 (100)

P330.17 Lana Bristol - Smooth Carded 250gsm. Hot Pressed, 50x65 (50).

P345.00 Van Gelder

150gsm 100% cotton papers for relief, proofing and book-making.

P345.32 Wove 150gsm 50x65 (50)

P345.31 Wove 150gsm 65x100 (50)

proofing and drawing papers

P323.10 Fabriano Academia

Originally made for sketch-books. The paper is acid-free and wood-free in white, with a light drawing tooth. The paper hence is good for all drawing and pastel work, proofing, etching, lithography and silk screen.

P323.11 160gsm 50x65 (100)

P323.12 200gsm 50x65 (100)

P323.13 200gsm 70x100 (100)

P323.14 200gsm roll 1.5x10mt

P323.15 160gsm roll 1.5x10mt

P324.02 Fabriano Proofing

Excellent proofing paper for relief and screen printing. Smooth-surfaced and acid-free, between cartridge and Fabriano Academia. 110gsm. 48x66cm. (250).

P345.01 Japon Calligraphy

A lightweight cream vellum paper, ideal for drawing, graphics and calligraphy. 130gsm. 48x64cm (50).

P345.52 Japon Proofing

A heavy-weight soft proofing paper in a warm cream tone. 225gsm.

P345.52 64x96cm (50)

P345.53 48x64cm (50)

P340.06 Snowdon Heavy Cartridge

A heavyweight, large format, acid-free and wood-free cartridge paper, suitable for large screen prints with its machine cut edges. Its heavy weight and size is excellent for collage and mixed media works, incorporating acrylic paint and glued down objects with printing.

P340.06 300gsm 70x100

P340.061 300gsm 50x70

P340.07 Snowdon Light Cartridge

A medium weight, medium sheet of paper that is made from wood-free alpha cellulose and is acid-free as well. Ideal for drawing and proofing in printmaking and silkscreen for schools. Measures A1 59x84cm. 130gsm.

P340.03 Kent Edition

This famous acid-free British cartridge paper has been used in Australia since the 1950s as a quality drawing and proofing paper. Off-white with a slight tooth, it is similar to Fabriano's Academia drawing cartridge. Measures A1 59x84cm (100). 190gsm.

P330.211 Lana Colour

High cotton content drawing/pastel paper with two drawing surfaces, using both sides of the paper. One side is relatively smooth, while the other is textured. It is off-white in colour and contains 45% cotton for extra scraping and rubbing back durability in life drawing and other exercises. Measures 50x65cm (50). 160gsm.

Note: This paper is endorsed by the Pastel Society.

P340.04 Surrey Cartridge

A good quality proofing and drawing paper in a warm cream colour - not bright white. Wood-free and acid-free. This paper is 'environmentally friendly', made from grown crops like Esparto Grass. Naturally, it costs a little more than recycled wood cartridge paper. The warmth of this paper makes it an excellent choice for all drawing, as well as a good proofing paper for etching, screen, and relief printing. Measures 59x84cm. 150gsm.

P342.02 Blotters - Imported

These double-weight, double-size blotters are like those in USA where blotters are used over again in contrast to our Australian 'throwaway' desk-type blotters. Although more expensive initially, they do not bulge and self-destruct and with due care can be more economic over a period in a printmaking department. They measure 86x122cm in a heavy stiff 400gsm cellulose material.

P342.021 Blotters - Australian

Inexpensive Australian made desk-style blotters. Often used behind each editioned print as it passes through the press to minimise the felt texture marks on solid black aquatints when using inexpensive pressed wool blankets. Sold only in packs of 50 sheets. 45x58cm.

japanese papers

Papers range from hand-made to machine-made, and we have designated terms for them - D/E for deckle-edged and C/E for cut-edged papers. In many cases, the D/E papers are more expensive than hand-made sheets and the pricelist will often indicate the mode of manufacture. Many C/E papers are quite unique and although relatively expensive, are immensely popular.

Organisation of Japanese Papers - Papers have been organised into colour groups, rather than by mode of manufacture..

Note: Minimum order for papers is per 10 sheets/style.

japanese papers - white

Perhaps the largest selling group of Asian papers in Japan and Australia are the Hosho type papers, characterised by their pure white colour, glazed upper surface and rough undersurface. The papers are totally unsized, so in calligraphy and Sumi painting, lines bleed to give a jagged soft appearance. Additionally, in block relief printing, the smooth side prints sharply and cleanly with oil-based ink allowing printing without a press by means of a simple bamboo baren.

P338 Hosho

The paper comes in three forms. Firstly, there is the thick stock sold as a 50 sheet pad, which is favoured by relief printers. Next, a light thin paper is sold in roll form; this is generally preferred by Sumi painters. Finally, we have a range of Hosho papers available in sheet form in varying sizes and one which is very soft and pliable. Also note there is a Hosho type listed below, made from a Manila pulp mixture, but is in a characteristic yellow/buff tone. Available in light, medium and heavy weight gsm.

P338.01 Hosho Hik large 109x78

P338.02 Hosho Hik medium 54x79

P338.03 Hosho Roll 18" wide - light
(460mm x 22 metres)

P338.04 Hosho Pads - heavy



P338.03

P338.05 Kozuke

Medium weight, white sheet with a matt finish on both sides. C/E, 63x94cm.

P338.06 Echigo

Lightweight, off-white sheet with a smooth front and slightly textured reverse side. D/E, 900x600.

P338.07A Awa

A stiff thick Hosho-like paper in a buff shade, made from Manilla fibres. Smooth front face and textured reverse side. C/E, 939x636.

Japanese papers - white laid

Second to the Hosho group of papers is one paper which stands out in sales from all the rest. It has a unique combination of price and quality, being a relatively heavy paper in a medium size, incredibly low priced, since it is a basic bulk seller in Japan, particularly in schools. It is pure white and has a light laid surface.

P338.07B Gyokuryu

Of medium weight, our largest selling rice paper. C/E, 520x720 (50).

P338.11A Sigami

Popular medium weight, off-white laid paper with occasional barely discernible white flecks of fibre scattered almost beneath the surface. D/E, 900x600.

Japanese papers - warm toned

This group is the largest, as it encompasses the huge range in warm tones from cream through to buffs and cool tones. It is usually based on the warm buff tone of the Kozo fibre with mixtures of other fibres, together with variations of surface glaze, internal stiffness and underside texture, for both machine and hand-made.

Our biggest selling paper in this group is the extra heavy weight plain Kozo paper with its excellent pricing structure. This extra large sheet is very heavy for its price. Whilst light enough to hand print with a baren, it is sufficiently heavy to screen and litho print as well.

P339.28 Gampi

Thin but very strong hand-made sheets made from 100% Gampi fibre, with a smooth vellum-like surface. Warm white in colour.

P338.11B Kozo Extra Heavy

The beautiful yellow/buff tone of pure Japanese Kozo fibre has been admired for centuries by the West. C/E, 939x636.

P340.00 Kitukata

Smooth oatmeal/off-white paper with a smooth front surface for sensitive printing applications. D/E, 43x53. Cool or warm white.

P338.13 Surgura

A medium weight, warm cream paper with a slightly fibrous surface, but stiff body. Within the paper, there are occasional small light particles that are barely perceptible without strong light. It prints well in all relief situations and is similar to Sigami and about as popular. D/E, 900x600.

P338.14 Mogami

Lightweight vellum-like paper with a smooth parchment-like feel in a warm buff tone. The tone is relieved with randomly scattered thin white fibres. C/E, 939x636.

P338.17 Torinoko

This classic paper has always been a favourite with Western printmakers for all processes, including etching, lithography and screen printing, as well as relief printing. Its smooth stiff surface prints well and its unique cream/buff tone is distinctive. When using it for etching, do not place it in a waterbath, instead place between dampened blotters sandwiched between polythene a few hours before use. Mould-made. White and buff. Measures 788x1091mm. C/E.

P338.18 Iwaki

A stiff, very fine laid buff paper, with a barely discernible laid pattern. C/E, 939x636.

P338.19 Maniro Diacho

This is a lightweight smooth firm paper in a small sheet form, but a little more yellow and translucent. A very inexpensive paper. C/E, 403x564.

P338.20 Shinano

Thick luxurious hand-made Kozo fibre paper, with an attractive cool buff tone and smooth surface. D/E.

P338.21 Kozo Extra Light

Lightweight sheet of strong Kozo fibre. Can be used for interleaving or Chine Colle, as the sheet size is very large. 160gsm C/E 636x939.

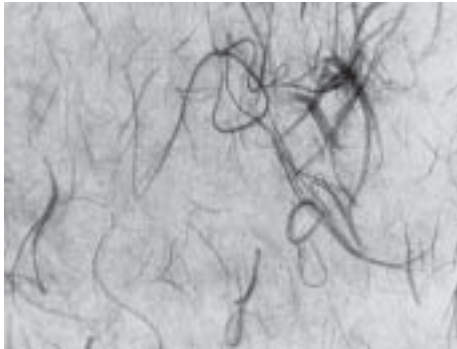
Japanese papers - textured

P338.51 Japanese Lace Spiral

65x91.

P338.50 Unryu Extra-Heavy - Cream

Swirling pearly threads of fibres flow randomly throughout the paper. Whilst the upper side of the paper is flat, the underside is quite rippled with texture. This paper has been selected for many calligraphy assignments and has been successfully laser printed from a computer, in spite of its texture, after cutting with a Stanley knife to A4 size. C/E, 939x636.



P338.50

P338.52 Unryu Light - White

Swirling flocks of fibres in a translucent sheet that is almost tissue. Very reasonable in price. C/E, 939x636. Sold per pack of 25 sheets.

P338.52 Unryu Light - Coloured

The same paper is also available in the following colours. C/E, 939x636.

- P338.53** Yellow (25)
- P338.54** Light Red (25)
- P338.55** Red/Purple (25)
- P338.56** Blue (25)
- P338.57** Light Blue (25)
- P338.58** Deep Green (25)
- P338.582** Deep Blue (25)

P338.59 Hitachi White

An unusual paper, even difficult to obtain in Japan. The thick soft paper has been couched onto worn wooded planks to dry, so every sheet has a unique pattern seemingly embossed onto it of the wood grain. This texture has often been used to effect when woodblock printing with a grained plate, with the interaction of the two grains - one printed and one in the paper. D/E, 848x636.

Japanese papers - fibre

Cool buff tone of Kozo paper with small cream random fibres throughout. The paper is very good in price for such a heavy weight and sized paper.

P338.61 Kozo Igusa

Best selling paper with fibre. C/E 636x939.



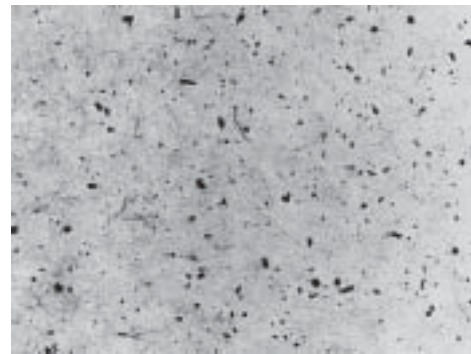
P338.61

P338.62 Kinwashi Ultra Thick

Thick stiff bone coloured paper, with brown thin random fibres of Manila layered more or less in an aligned straw-like pattern. The front side has a relatively smooth surface, but the back is slightly matted with fibres. C/E, 600x900.

P338.63 Kozo Kawairi

Again as above, a cool Kozo stock but lifted with a random distribution of small pieces of Mulberry bark. Smooth on the upper face. C/E, 636x939.



P338.63

P338.64 Mutu \$4.00

Relatively thick rice paper in an off-white stock, mixed with small to medium pieces of Mulberry bark. The pieces are sometimes only partially visible, giving the chips a silver or purple luminescence. D/E, 600x900.

P338.65 Chiri

Relatively thick Kozo paper with large pieces of Mulberry bark randomly scattered through the sheet. This paper has often been selected for lino and wood block prints that have large areas of strong black. D/E, 636x900.

P338.66 Raw Silk

One of the most interesting sheets stocked is also one of the most expensive. This relatively thick paper is surprisingly light and the random swirling of white silk fibres have a lustrous quality. The threads sometimes change to a silver grey in the raw silk fibres, adding another dimension of interest to this paper. The sheet is almost a piece of art by itself. D/E, 636x939.



P338.66

chinese papers

CS812 Chinese Washi Papers

Sumi paper for washi and Sumi block printing classes. 390x456(50).

CS901 Chinese Washi Rolls

Sumi paper for washi and Sumi painting.

- CS901** 460mm wide x 25 metres long
- CS902** 690mm wide x 10 metres long
- CS903** 970mm wide x 10 metres long

nepalese papers

The Nepalese have been making papers by hand for hundreds of years using a variation of the original Chinese method as it spread throughout the east and up through India. All these papers are made from Lotha fibres (similar to Mulberry) and sometimes contain visible flecks of Lotha bark. With the exception of the 'Washi' group, most of the remainder are made on the mould and couched onto sheets of tin

nepalese papers - handmade rice

P339.01 H-1

Semi-transparent, off-white sheet, relatively even fibres. 30gsm. 47x66(25).

P339.02 H-2

Off-white sheet with evenly dispersed long buff coloured fibres, giving an overall ivory tone. 30gsm. 52x80(25).

P339.04 H-4

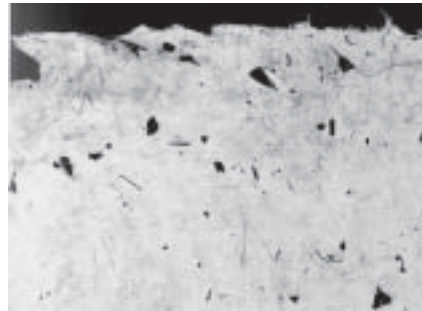
A heavier weight off-white sheet where additional stiffness is required; eg. as bookbinding cover papers where calligraphy is used. 50gsm. 52x80(25).

P339.05 H-5

Off-white thin Japanese 'Washi'-style paper, made by throwing handfuls of paper stock into the water-bath on top of a screen to acquire a unique cloud-like effect in the paper. 20-30gsm. 52x80(25).

P339.171 Nepalese Dragonskin

Heavy-weight paper in violet, gold and turquoise. 70gsm. 52x82.



P339.171

P339.08 Nepalese with Leaves

40gsm. 52x82.

P339.00 Nepalese Rolls

65gsm. 900x3 metres.

nepalese papers - coloured

P339.12 H-5 Mid-Green

30gsm. 48x74. (25).

P339.121 Nepalese Turquoise

45gsm. 52x74.

P339.131 Nepalese Golden Ochre

Ochre toned light paper. 40gsm 52x76(25).

P339.132 Nepalese Red Lokta

45gsm. 52x74.

P339.13 Nepalese Dark Blue Lokta

45gsm. 52x74.

P339.133 Nepalese Pink Lokta

45gsm. 52x74.

P339.134 Nepalese Black Lokta

45gsm. 52x74.

P339.182 Nepalese Violet Lokta

45gsm. 52x74.

P339.183 Nepalese Brown Lokta

45gsm. 52x74.

P333.36 Nepalese Yellow

Heavy-weight paper with gold multi-coloured flecks. 200gsm. 450x450.

P333.37 Nepalese Red

Heavy-weight paper with red multi-coloured flecks. 200gsm. 450x450.

P339.181 Nepalese Banana Tissue

45gsm.

P339.17 Nepalese Dutlighari Leaf

45gsm.

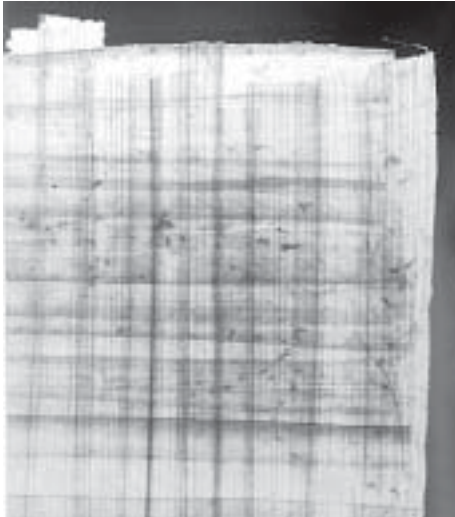
handmade decorative papers

P336.33 Cannabis Fibre Paper

Very heavy-weight handmade Nepalese paper.

P340.01 Egyptian Papyrus

Relatively large sheets of this ancient form of paper. Sheet size measures 30x40cm.



P340.01

restoration papers and tissues

P339.22 Glassine Acid-Free

This translucent interleaving paper has traditionally been used as facing sheet in all older books due to its unique quality of repelling oil based inks, thus preventing sticking between pages. In recent years, it has often been used by painters and printmakers alike for works on paper and mixed media.

P339.22 41gsm 50x75cm (100).

P339.222 41gsm 75x100cm (100)

P339.221 Acid-free roll 1500mmx18 mts

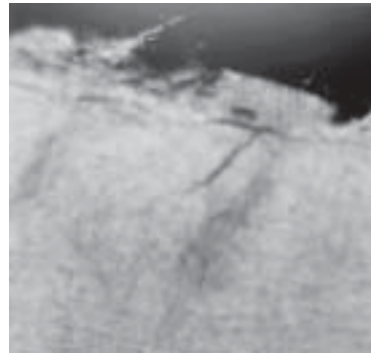
P339.223 Acid-free roll 1500mmx9 mts

P339.09 Khadi TP-I Mulberry Restoration

This wood-free and acid-free paper is used by the British Museum and the Smithsonian Institute. Its strong long fibres have the effect of disappearing when glued down to a substrate paper. In recent years, this quality has been used to advantage by printmakers and painters for works on paper. 10gsm. 50x56cm (100).

P339.091 Khadi TP-2 Mulberry Restoration

20gsm. 50x56cm (100).



P339.23

P339.093 Khadi TP-3 Mulberry Restoration

30gsm. 78x87cm (100).

P339.25 Mending Tissue

Laid surface. Smooth off-white Japanese tissue. D/E.

P339.25 79x55cm

P339.251 Roll 800mmx10 mts

P339.27 Sagigawa Tissue

Ultra-lightweight Japanese tissue with a smooth surface. Warm white. C/E. 40x56cm.

P339.26 Japanese Tissue - Oversize

Lightweight filament Japanese tissue. White. C/E. 102x71cm.

P339.29 Acid-Free Tissue

This paper is so inexpensive we only sell it in ream (500) quantities. 10gsm. 50x75cm.

P339.30 Acid-Free Tissue - Oversize

Made for both restoration and printmaking. Whilst more expensive, these sheets are more than double the size of the above tissues. 10gsm. 75x100 (100).

pastel papers

P355.70 Sennelier Pastel Card

This card is pH neutral and has a specially formulated coloured coating containing cork powder, so finished work does not require fixative. Available in 14 colours. 360gsm. 50x65cm.

Colours: Antique White (001), Sand (002), Light Sienna (003), Earth (004), Peach (005), Salmon (006), Van Dyke Brown (007), Light Green (008), Dark Green (009), Light Blue (010), Dark Blue (011), Light Grey (012), Dark Grey (013), Charcoal (014).

P355.691 Sennelier Pastel Card - Pads

Twelve sheets of card per pad, in six shades.

P355.691 16x24cm (12)

P355.67 24x32cm (12)

P355.69 30x40cm (12)

P355.68 24x32cm (14) 14 shades

P355.85 Sennelier Pastel Card - Oversize

Measures 60x80cm.

Colours: Antique White (001), Sand (002), Light Sienna (003), Light Blue (010), Dark Blue (011), Light Grey (012).

P355.60 Sennelier Velvet Pastel

P355.61 Light Grey 130gsm 50x65

P355.62 Beige 130gsm 50x65

P355.63 Black 130gsm 50x65

P355.594 Hahnemuhle Velvet Pastel - Sheets

White. 260gms. 50x70cm.

P355.592 Hahnemuhle Velvet Pastel - Pads

Pads contain 10 pages of white sheets.

P355.592 24x32

P355.593 36x48

P330.20 Lana Pastel Paper

Made of 45% cotton, these classic acid-free pastel papers have been used for over 100 years. Twin-surfaced; smooth on one side and textured on the other, they can be used for pastel, charcoal, pencil, pen and ink, gouache and wash drawings. The range of 30 colours includes White, Cream, Oyster and Ivory. 165gsm. 50x65cm (10).

P330.30 Lana Pastel Paper - A4 Sheets

Sold per pack. Acid-free A4 sheets, 45% cotton. Same colours as above. 165gsm. 21x29.7cm (25).

watercolour board

P391.03 Columbia Watercolour Board

Backed onto extra heavy-duty card, this 400gsm watercolour paper/board is excellent value for money compared to other products. Available in smooth, medium and rough surfaces, all at the same price. 20x30". Single thickness.



P391.03

artists' sketch books and pads - sennelier

For over a century, artists around the world have visited the famous Sennelier shop opposite the Louvre, stocking up from their vast range of artist sketchbooks, bound books, and special editions (including the hand-marbled covered, hand-sewn, deluxe album). From this time on, the large range of books made for specific art techniques have been highly successful.

Although more expensive than locally made pads and books, they offer the opportunity to purchase a special book as a present. Alternatively, they constitute a product for the serious artist, concerned with sketchbook durability over time and travel trips.

P355.35 Sennelier L'Album - Ringed (D-1)

This the largest series in the Sennelier range, made from acid-free, lightly-toothed drawing paper with 50-60 pages per book. The books are ring-bound, in both portrait and landscape formats, with an embossed heavy card tan-coloured front cover.

P355.36 Ring Album 7x10

P355.36C Ring Album 10x15

P355.37 Ring Album 12x18

P355.37C Ring Album 16x24

P355.38 Ring Album 21x27

P355.39 Ring Album 24x32

P355.40 Ring Album 30x40



P355.38

P355.91 Sennelier Carte D'Art Pads (D-340)

Acid-free multimedia paper for oil pastel, oil sticks, and specially formulated to resist bleeding and making oily stains onto next clean sheet. The pads consist of heavy-weight textured 340gsm paper. Note that single large sheets of this paper are available.

P355.91 Carte D'Art Pad 15x21

P355.92 Carte D'Art Pad 24x32

P355.93 Carte D'Art Pad 30x42



P355.92

P355.54 Sennelier Grey Felt Paper Pads (C-4)

Embodies 'l'esprit du pastel'. Grey felt textured paper, interleaved with acid-free glassine to protect artwork from dust. These pads are made for extra soft pastel and charcoal drawings. Available in portrait binding in three sizes. 25 sheets.

- P355.55A** Grey Felt Pad 16x24
- P355.55B** Grey Felt Pad 24x32
- P355.55C** Grey Felt Pad 33x41



P355.55A

P355.00 Sennelier Aquarelle Spiral Pads

Spiral-bound, heavy acid-free 200gsm watercolour paper, 100% rag, with a rough surface. Each pad has 21 sheets of paper and is bound in landscape format. Four sizes.

- P355.03** Aquarelle Pad 10x14
- P355.02** Aquarelle Pad 12x16
- P355.01** Aquarelle Pad 16x24
- P355.01A** Aquarelle Pad 24x32



P355.00

P355.56 Sennelier Oil Pastel Spiral Books (C-3)

Oil pastel cards, spiral bound - 12 sheets per book.

- P360.20** Oil Pastel 16x24
- P360.22** Oil Pastel 24x32
- P360.21** Oil Pastel 30x40



P360.20

P355.07 Sennelier Pastel Card Pads

Six assorted colours of acid-free, neutral pH pastel card designed for soft pastel. Consists of 12 sheets per pad. 250gsm.

- P355.691** Pastel Paper Pad 16x24
- P355.67** Pastel Paper Pad 24x32
- P355.69** Pastel Paper Pad 30x40



P355.691

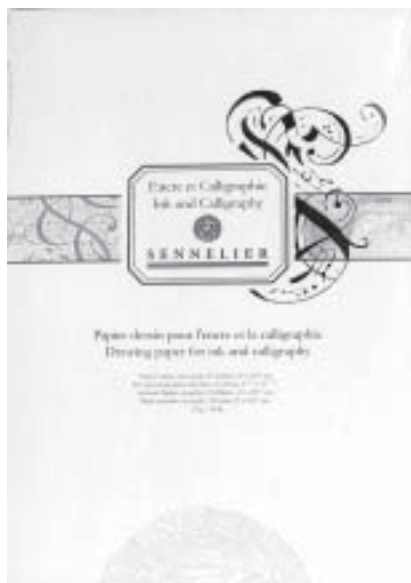
P360.40 Sennelier Bristol Pads

Acid-free paper of 224gsm in a satine texture, designed for charcoal, pencil, pastel and light washes. These pads are spiral-bound in portrait format in two sizes with 28 sheets per book.

- P360.40** Dessin Book 16x24
- P360.41** Dessin Book 24x32

P355.94 Sennelier Calligraphy Pads

Acid-free, off-white paper of 70gsm in rectangular format. 125 sheets per bound book. 21x29cm.



P355.94

P355.05 Sennelier Jumbo Watercolour Pads

Heavy-weight, acid-free cellulose watercolour paper of 300gsm in a cold-pressed surface, designed for watercolour, pencil and drawing ink. These pads are top-glued, with 100 sheets per book. 24x32cm.

P355.98 Sennelier Acrylic Wash Block

A heavy-weight acid free paper of 230gsm in a cold-pressed surface, designed for acrylic painting, gouache, pencil and drawing ink. These blocks are glued on all four sides with 10 sheets per book.

P355.22 Acrylic Wash Block 16x24

P355.23 Acrylic Wash Block 24x32

P355.24 Acrylic Wash Block 38x86



P355.22

P360.04 Sennelier Le Maxi

Giant pad of light-weight drawing paper in three sizes, consisting of 70gsm acid-free paper, glued into a pad of 250 sheets, for art students and life drawing classes.

P360.04D Le Maxi 15x15

P360.04A Le Maxi 25x25

P360.04B Le Maxi 24x32

P360.04C Le Maxi 32x32



P355.04

P355.10 Sennelier Watercolour Blocks

Acid-free off white French watercolour paper of cellulose content, in a cold-pressed, hot-pressed and rough surfaces of 300gsm for both field and studio painting. These blocks contain a generous 20 sheets per block glued on four sides.

P355.11 Watercolour Block 10x15

P355.13 Watercolour Block 18x26

P355.14 Watercolour Block 26x36



P355.13

P355.170 Sennelier Panoramic Blocks

Available in cold-pressed, hot-pressed and rough surfaces. 10x25cm

artists' journals and albums - sennelier

Sennelier have made deluxe artists' journals in a range of papers, styles and books, with both hand-sewn and machine-sewn bindings. Some are covered with hand-marbled paper; others in various linen covers.

P355.25A Sennelier Metis Journals (A-2)

A best-selling item is the natural linen-covered Metis range (A-2) which are hand-sewn with natural off-white acid-free 125gsm paper. Each book contains 46 sheets, in both portrait and landscape formats. These books are slim size, so as to be easily carried on field trips where the heavy linen resists wear and tear and rough handling.

- P355.25A** Metis Journal 10x7.5
P355.26 Metis Journal 11x16
P355.28 Metis Journal 13x21
P355.29 Metis Journal 16x24
P355.30 Metis Journal 21x27
P355.31 Metis Journal 24x32

P360.50 Sennelier Black Linen Metis Journals

Acid-free 125gsm paper. 92 sheets.

- P360.50** Blk Linen Metis Journal 11x16
P360.51 Blk Linen Metis Journal 16x24
P360.52 Blk Linen Metis Journal 24x32

P355.20 Sennelier Red Linen Journals

A sturdy, heavy weight 200gsm acid-free off-white French paper, made for field studies and washes in watercolour and gouache. Pages are thread-sewn in a thick volume of 80 sheets and bound in both landscape and portrait formats.

- P355.20** Red Linen Journal 11x16
P355.201 Red Linen Journal 16x24
P355.202 Red Linen Journal 24x32



P355.20

P355.49 Sennelier Photo Journal

Hand-sewn popular journal, supplied to artists for photographs and presentations, with an excellent combination of price, size, quality and value. The volume contains 32 sheets of 240gsm black paper, with a black linen cover and spine.

- P355.491** Photo Journal 17x21
P355.492 Photo Journal 21x27
P355.493 Photo Journal 27x35

P355.46 Sennelier Metis Albums

Hand-sewn album of 32 pages, with beige linen cover. The toothed drawing paper is a heavy white 240gsm acid-free paper.

- P355.46** Metis Album 17x21
P355.47 Metis Album 21x27
P355.48 Metis Album 27x35



P355.46/P355.47

P355.86 Sennelier Ingres Spiral Pads

Laid surface in white; 85gsm. 42 sheets per pad.

- P355.86** 16x24
P355.86A 24x32
P355.86B 30x42

P355.34 Sennelier Kraft Paper Sketch Book

Hard-covered sketchbook which fits into a pocket or handbag, but comprises 50 sheets of 90gsm fine Kraft-type paper for pen, pencil and pastel sketching, as well as gouache. Measures 21x30cm.

artists' sketch books and pads

P355.95 Sennelier Gouache Pads

Same heavy 200gsm paper as used in Red Journals. Acid-free. Made in France.

- P355.95A** 24x32cm
P355.95B 30x40cm

P396.30 Fabriano Classic Journals

Classic thick dark blue/black cover containing white and ivory Ingres paper with a laid surface. Suitable for sketching, pencil, ink and pastel drawing.

- P396.31** 16 x 16cm - 96 sheets
P396.32 12 x 16cm - 192 sheets
P396.33 16 x 21cm - 192 sheets



P396.30

P396.41 Fabriano Colour Journals

Black covered journal containing 12 different coloured Ingres acid-free paper. 16x21cm, 192 sheets.

P347.05 Garza Deckle Journals - Watercolour

Made in Spain. 100% cotton watercolour. These are the first hand-made journals with 4 deckle edges; 3 already existing and the 4th one created when the page is torn from the journal spine. This means the sheet may be float-framed or box-framed without requiring a matt surround. Sheets are surface-sized and 260gsm in weight.

P347.21 21 x 30cm - 10 sheets

P347.22 30 x 40cm - 10 sheets

P347.23 30 x 40cm - 20 sheets

P347.10 Garza Deckle Journals - Drawing

Similar to above, comprising 100% hand-made cotton sheets, which are smooth surfaced for drawing and ink. 220gsm in weight.

P347.10 21 x 30cm - 10 sheets

P347.14 30 x 40cm - 20 sheets

P347.11 21 x 30cm - 20 sheets

P347.12 21 x 30cm - 40 sheets

P350.143 Lana Drawing Pads - Dessin

Lana blocks and pads have been manufactured in France since 1590 and are recognised for their high end quality and superb presentation. These drawing pads are comprised of natural white acid-free cellulose paper without optical brighteners. 220gsm. Suitable for all techniques of drawing, charcoal, ink, chalk, pencil and acrylic.

P350.143 A5 Dessin Spiral

P350.144 A4 Dessin Spiral

P350.145 A3 Dessin Spiral

P350.146 A2 Dessin Spiral



P350.145

P350.142 Lana Bristol Pads

Acid-free heavy weight pads. 250gsm. For drawing, pen and ink, gouache. Available in A4.



P350.142

P350.135 Lana Watercolour Pads and Blocks

Acid-free, heavy weight 25% cotton, cold-pressed surface sized watercolour paper. Available in both spiral pads and glued blocks.

Note: The spiral pads have the old-fashioned perforated holes for neat 'tear-out' of individual sheets.

Spiral Bound Pads

P350.135 A5 13.5x21

P350.136 A4 21x30

P350.137 A3 32x41



P350.135

Glued 4-sided Blocks

Note: Sheets of this paper are available in 50x65cm..

P350.132 A5 17x24

P350.133 A4 24x32

P350.134 A3 30x40

P350.093 Lana 100% Cotton Aquarelle Blocks

Glued on 4 sides, available in hot-pressed, cold-pressed and rough surfaces.

P350.093 105x148

P350.094 230x310

P350.0941 310x410

P350.0945 360x510



P350.063 Hahnemuhle Deluxe Journals

Manufactured in Germany. Black-covered, hand-bound journals for drawing and sketching in pastel, pen and ink, etc. Soft, warm white quality paper sewn into traditional binding. The 140gsm paper has a light tooth and leatherette cover. Available in both portrait and landscape formats. All books contain 90 pages.

- P380.01 A5 15x20
- P350.065 A4 20x30
- P350.069 A3 32x41



P350.065

P382.21 Hahnemuhle Journals - Portrait

Black-covered, sewn books. 120gsm paper. Good for travelling light. All books contain 64 pages.

- P382.21 A5 15x20
- P382.22 A4 20x30
- P382.23 A3 32x41

P345.11 Hahnemuhle Bamboo Papers

Made from bamboo/cotton mix. This environmentally friendly item won best new art product at the 2007 Frankfurt Art Show. Suitable for watercolour, drawing and ink wash techniques. Warm white in colour, 105gsm.

- P345.11 24 x 32cm - 30 sheets
- P345.12 30 x 40cm - 30 sheets
- P345.13 36 x 48cm - 30 sheets
- P345.14 42 x 56cm - 30 sheets

P345.15 Hahnemuhle Bamboo Sheets

Heavier, single sheets of above product, measuring 50x65cm. 265gsm.

stationery

P410.04 Fabriano Stationery

For over 100 years, Fabriano have made a range of hand-torn deckle edge stationery. Each piece has been mould-made. These note cards can be used for special invitations or original print postcards. Matching hand-torn envelopes exactly fit the note card sizes. The folding note cards have a horizontal or vertical format.

Note Cards

- P410.00 Note Card - Small 8.5x13cm
- P410.01 Note Card - Small 11x17cm
- P410.011 Note Card - Medium 15x20cm
- P410.02 Folded Card - Small 11x34cm
- P410.021 Folded Card - Small 13x17cm
- P410.03 Folded Card - Small 17x23cm
- P410.011 Folded Card - Large 15x34cm
- P410.03A Note Card - Extra large 20x30

Envelopes

- P410.04 Medium - 12x18
- P410.041 Large - 16x21cm
- P410.031 Small - 9x14cm



P410.03

P415.01 Envelopes - Indian

Hand-made envelopes with deckle edge. 14x22.

P415.00 Stationery - Old Holland

Hand-made stationery.

Note Cards

- P415.31 Note Card - 9.2x13.5cm
- P415.30 Note Card - 10.1x15.8cm
- P415.40 Folded Card (L) - 10x31.6cm
- P415.42 Folded Card (P) - 13x18cm
- P415.41 Folded Card (P) - 16x20cm
- P415.43 Folded Card (P) - 28x90cm

Envelopes

- P415.61** Small - 9x14
P415.62 Medium - 11x17cm
P415.63 Large - 14x20cm

digital printing papers

Over the last few years, enormous expansion has occurred in the area of digital art. Derived originally from photography, it has now spread into both painting and printmaking. Inkjet printing constitutes micro-level airbrush painting, but with the airbrush controlled by modern sophisticated computer hardware and software. In recent times, ground pigment inks have been developed for the more expensive printers. This has led to adapting acid-free rag watercolour papers into specifically designed papers for this process. Papers have special surface coatings which prevent dot gain and spreading of lines, plus substances which allow drying yet still retain the vitality and density of the on-screen image.



P354.21 Digital Papers - Museo

America's oldest paper mill, Crane Company, have been manufacturing banknote paper for the US government for almost 100 years. Their knowledge regarding quality and cotton paper-making is at the highest level.

For many years, Crane have been making a 100% cotton digital paper for Epson, and in the last few years, have decided to brand their own cotton inkjet paper which has been passed as highest quality and additionally, contains no optical brighteners. The original Museo rag paper range has been added to in the last year with a double-sided paper, Museo II, and an extra gamut rag inkjet paper called Museo Max. Finally this year at the main photo expo in Orlando, Florida, Crane launched the first photo-style paper made to emulate the traditional stipple gelatine-coated photographic paper popular in the 1970s. This paper has caused a revolution with its seven separate coatings and is called Museo Silver Rag.

Note: Printing profiles available at www.crane.com.

Sheets

P354.21 Museo AM - Sheets

100% cotton digital paper in white with vellum surface. Packed in boxes of 25.

- P354.21** 250gsm 8.5x11"
P354.21A 250gsm A4
P354.22 250gsm 11x17"
P354.21B 250gsm A3+
P354.23 250gsm 13x19"
P354.23A 250gsm 17x22"



P354.21

P354.23B Museo I - Large Sheets

100% cotton digital paper in heavyweight and panoramic sizes. Packed in boxes of 25.

- P354.23B** 365gsm 13x40"
P354.21C 365gsm 24x36"
P354.23D 365gsm 35x47"

P354.41 Museo II - Double-Sided Sheets

Coated both sides for cards and books. More expensive than above paper. Packed in boxes of 25.

- P354.41** 250gsm 13x19"
P354.42 250gsm 8.5x11"
P354.43 250gsm 17x22"

P354.32 Museo Max - Sheets

This is a white high gamut, light-textured cotton paper which allows for depth of colour and deepest blacks. Use where texture and colour input is required and maximum black is desirable. Only available in 365gsm. Packed in boxes of 25.

- P354.32** 365gsm 17x22"
P354.33 365gsm 35x47"
P354.31B 250gsm A4
P354.322 250gsm A3

P354.50 Museo Stationery

Crane make beautiful boxed sets of cards and envelopes from Museo II paper; both sides can be printed on. Made from 100% cotton 220gsm stock. 50 cards per box.

- P354.50** 220gsm 112x150mm
P354.51 220gsm 140x190mm
P354.53 220gsm 130x130mm

Rolls

P354.321 Museo Max - Rolls

100% cotton digital paper in 250gsm. Rolls measure 50 feet long.

- P354.321** 250gsm 17"x50"
P354.322 250gsm 24"x50"
P354.323 250gsm 60"x50"

P354.21 Museo Digital Portfolio Rag

Use this paper for exceptional tonal range and best color and black & white photographic work. Just off bright white (brightness - 91), it is extra smooth and made from 100% cotton internally buffered to a pH of between 7.9 and 8.5. Crafted for professional use, the 100% cotton base is pH-neutral, acid free, brightener free, and also flake free. This means images will retain their bold colors and tonal subtlety for generations. Great intensity with pigmented inks.

P354.202 Museo Portfolio Rag - Ultra-Smooth

P354.202	A-4 (box 25 sheets)
P354.203	A-3 (box 25 sheets)
P354.204	17x22" (box 25 sheets)
P354.206	17" Roll x 50ft long
P354.207	24" Roll x 50ft long
P354.208	44" Roll x 50ft long

P354.490 Museo Silver Rag

An inkjet digital paper with the same style and feel of the classic stipple gelatine paper of the 1960s/70s. Up to 7 separate coatings are applied to a 100% acid-free cotton base. This paper has excellent gamut for both colour and black and white, with exceptional depth of range in the midtones. Available in sheets and rolls; 300gsm.

Sheets

P354.490	300gsm 8.5x11"
P354.495	300gsm A4
P354.491	300gsm 13x19"
P354.492	300gsm 17x22"
P354.493	300gsm 24x36"
P354.494	300gsm 35x47"

Rolls

P354.496	300gsm 17"x50'
P354.497	300gsm 24"x50'
P354.498	300gsm 44"x50'
P354.499	300gsm 50"x50'

P354.21 Digital Papers - Lana

The French mill, Lana, produces excellent digital papers. We stock rolls only.

P354.541 Lana Jet

Cotton inkjet paper available in 50' rolls. Warm white, similar to Arches printmaking paper in surface and tone. Coated on one side only and sold in USA as Concord Inkjet paper. Suitable for both dye and pigmented inks.

P354.541	260gsm 17"x50'
P354.542	260gsm 24"x50'
P354.55	260gsm 44"x50'
P354.56	260gsm 50"x50'

P352.50 Fabriano Digital Papers

Whilst Fabriano are the world's oldest paper mill and oldest makers of watercolour paper they have only recently commenced making professional digital coated Artistico in sheets and rolls. Now artists have the opportunity to print on exactly the same paper that they may have used for years in their fine art painting and drawing. Artistico, in bright white, is made from 100% acid-free cotton, and is free from optical brighteners.

P352.50 Fabriano Imaginart

Extra white, available in sheets and rolls. For best results, Fabriano recommend the use of pigmented inks for deepest blacks and highest gamut colour. This paper also allows original watercolours to be printed on the same stock as an original painting, drawing or pastel.

Sheets

P352.51	A-4 Imaginart - Box (25)
----------------	--------------------------

Rolls

P352.52	17" Imaginart x 40ft
P352.53	24" Imaginart x 40ft



P352.51

P352.60 Fabriano Tiziano

For stampers, cardmaking and limited edition books using digital images, Fabriano have made a lightweight digital paper from their best-selling pastel paper range. They selected Tiziano high rag content paper as the base for digital coating. Sold per box of 25 sheets. 160 gsm.

P352.51	A-4 Tiziano
P352.51	A-3 Tiziano

P351 Garza Handmade Digital Papers

This new small mill located near Barcelona in Spain, specializes in makings of double-sided 100% cotton digital papers in a variety of sizes and weights.

P351 Garza Print Plus

P351.2	100 x 150cm 260gsm
P351.3	70 x 100cm 260gsm
P351.4	56 x 76cm 260gsm
P351.5	56 x 76cm 260gsm
P351.6	50 x 65cm 180 gsm
P351.7	30 x 40 cm 180gsm
P351.8	35 x 40 cm 260gsm
P351.9	A-5 180gsm
P351.10	A-4 260gsm

P354 Japanese Digital Washi Papers

A small Japanese mill located in Japan's papermaking region specialises in double-sided thin washi papers in small and large sheets. Excellent for transparent light weight overlays in invitations and multimedia projects.

P354.70 Japanese Hosho and Kozo Papers

- P354.71** Hosho 17x22" 63gsm D/S
- P354.71A** A4 White Hosho D/S Pk 10
- P354.72** Kozo Warm/Wht 17x22" 63gsm D/S
- P354.72A** A4 Kozo Warm Wht D/S Pk 10
- P354.73** Kozo Buff 17x22 63gsm D/S
- P354.73A** A4 Kozo Buff D/S Pk 10

digital canvas

P354.352 Museo Digital Canvas

Museo uses superior-quality coatings optimized for pigmented inks to provide professional printing performance, with a new unique water-resistant surface. A new neutral hue canvas coating to complement landscape photography is now available. Most digital canvas has a warm hue for portrait photography so Museo has specifically made theirs neutral (brightness 94). Museo also has a less expensive matt non-glare canvas which can be painted on, and a glossy deluxe canvas which emulates an Old Master varnished surface.

P354.352 Museo Maestro Canvas - Matt

Poly blend canvas for max strength brightness 97. 400 gsm.

- P354.352** 17" Roll x 40ft long
- P354.353** 24" Roll x 40 ft long
- P354.354** 44" Roll x 40ft long

P354.370 Museo Maestro Canvas - Glossy

Strong polyblend canvas, brightness 94. 435 gsm.

- P354.370** 17" Roll x 40ft long
- P354.371** 24" Roll x 40 ft long
- P354.372** 44" Roll x 40ft long



NOTES
