

etching (non-toxic)



Product Listing 2010

etching plates - solar (premium quality)

E002.7 Polymer Plate - Pre-sensitized

An acid-free etching process for those sensitive to dangerous chemicals. Made from steel-backed photosensitive polymer which is water-soluble. Exposure to UV light makes these areas waterproof. Developing the plate in warm water washes out unexposed areas to create an etching or relief plate. This process gives excellent ink receptivity. Develop quickly using a brush to remove the unexposed portion. Dry, then harden the plate in sunlight. (Data sheet available).

E002.8	610x430
E002.81	305x430
E002.82	215x305
E002.83	150x215
E002.84	105x150



E002.84

etching plates - solar (economy)

E002.60 Polymer Plate - Pre-sensitized (Gold)

Same process as above, but utilising economy plates.

E002.60	610x430
E002.61	305x430
E002.62	215x305
E002.63	150x215

drypoint plates - not etched

E007 Paper Plates

School and beginners' paper drypoint plates. Draw into plate with fine ballpoint pen for line. Texture with roulette wheels sandpaper - Hammer stamping. Cut and strip surface for aquatint-like effects. Drybrush stripped areas with PVA glue.

Best used with Faust ink and a brush. Also use as plates for colour roll up and mono-printing. Supplied in packs of 10 plates.

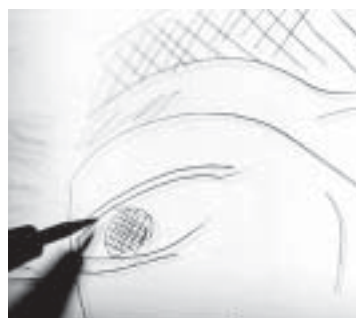
E007.1	Small	127x190 mm
E007.2	Medium	190x255 mm
E007.3	Large	255x380 mm
E007.4	Extra large	380x510 mm



E008 Plastic Plates

School and beginners' plastic drypoint plates. Available in clear thick plastic to test ink out while working. Usable both sides. All etching tools may be used including needles, roulettes, scrapers, burnishers. For fastest results use an easy wiping ink like Faust Jet Black Ink.

E008.1	Small	125x190 (10)
E008.2	Medium	190x250 (10)
E008.3	Large	250x380 (10)
E008.4	Extra Large	380x500 (5)
E008.6	Half sheet	500x760 (1)
E008.5	Full sheet	760x1000 (1)
E008.5	Full sheet/1/2 thick.	760x1000 (1)



E008

E008.70 Plastic Plates - Deluxe

Similar to above item, but with both sides protected by removable thin blue polythene cover sheets to guarantee a perfect scratch-free surface. Note that the plastic is harder, being a better grade than E008 above.

E008.711	Extra Small	100x150 (10)
E008.71	Small	150x203 (10)
E008.72	Medium	203x305 (5)
E008.73	Large	305x405 (5)
E008.74	Sheet	600x900 (1)

E028.30 Sunplate Tint Screens

Made in USA.

E028.31	A6 Tint screen
E028.32	A5 Tint screen
E028.33	A4 Tint screen
E028.34	A3 Tint screen (economy)

E028.231 Wet Media Acetate

Coated plastic which can be painted out with water-based paint or Indian ink to make a film positive for any photo-based printmaking process; ie, photo silkscreen or photo etching. Best results are achieved using Sennelier Red Ochre watercolour. This film can also be used for inkjet printing of positives. Made in USA.

E028.231	50 x 70mm
E028.23	70 x 100mm

E028.28 Matt Acetate

Use for direct drawing to make film positives for Sun plates and silkscreen printing. 6B pencils or litho pencils are best for building tone. Available in rolls, 1.2 metres x 3.6 metres long. Sold per sheet. Made in USA.

E028.29 Drafting Film (thick)

Matt finish film similar to above. Measures 76 x 100cm. Sold per sheet.

photographic polymer film

E028.01 Photopolymer Film - Velour Plus

This technique (illustrated below), makes use of light-sensitive, adhesive photopolymer film which may be stuck down to metal or to any other flat surface. After exposure to UV light it can be developed with a simple non-toxic solution, washed, dried and inked up. Additionally, it can be used as a photo-acid resist on metal plates such as zinc and copper, and etched in ferric chloride solution. Available in sheets and rolls.

Sheets

E003.47	610 x 500mm
E003.53	610 x 1000mm

Rolls

E003.45	610 x 3 metres
----------------	----------------



E028.01

E028.04 Photopolymer Tint Screens

Specially made tint screens for producing a deep black as a background tone in mezzotint-like effects or for printing drawings and half tones for velour plates listed above.

E028.041	Small	210x300
E028.042	Medium	300x420
E028.043	Large	420x600
E028.044	Extra-large	530x740

E028.033 Acrylic Stopout Varnish - Lascaux

Fast-drying acrylic which can be removed with soda ash crystals.

E028.033	50ml
E028.034	100ml

E028.83 Acrylic Hard Ground

Fast-drying, acid-proof acrylic hard ground which can be removed with soda ash solution.

E028.830	50ml
E028.831	100ml

E028.825 Acrylic Hard Ground - Heidelberg

Fast-drying, black acrylic hard ground which is acid-proof; can be removed with soda ash solution.

E028.825	100ml
E028.826	500ml

E028.91 Acrylic Aquatint Ink - Airbrush American. Developed by Badger. Ultra-fine pigment, triple filtered to prevent airbrush clogging. mix 1 : 1 with distilled water for air-brushing. 50ml concentrate.

photographic printmaking - general

E028.81 UV Mirror Back Photo Lamp

Photo exposure lamp for all photo processes. 300 watt.

E028.82 UV Cabinet - Enclosed

Cabinet for exposure - with lamp.

CS158 Airbrush Kit

For aquatint spraying and fine art. Glass jar and flexible hose.

CS156 Air Compressor

Low noise, diaphragm/bench type mini compressor with regulator for air brushing. 240 volt.

E028.84 Soda Ash Crystals - Heidelberg

Developer for the velour photo-polymer film process, as well as a general stripper for acrylic grounds and varnishes. Mix with water as per instructions. 500 gm.

art transfer paper - lazertran process

E028.60 Lazertran Transfer Paper

Lazertran is a unique transfer paper developed for the school market. It comprises an ultra-thin, plastic layer bonded to soft paper which after printing, can be stripped off and transferred to other surfaces. The effects are many and varied since it can be adhered to glass, ceramic, metal, wood, fabrics such as cotton, silk and linen, and oil and acrylic painted surfaces, as well as paper. The process is a form of colour pigment transfer which makes use of the relatively stable colour photocopy toner dyes. Available in two styles; regular, and ultra-thin for applying to silk fabric. Also available for direct printing from inkjet printers for both waterslide decals and as a textile transfer for t-shirts and fabrics. Inkjet Foil is the latest product.

- E028.60** A4 Regular (1)
- E028.61** A3 Regular (1)
- E028.64** A4 Silk (1)
- E028.62** A3 Silk (1)
- E028.58** A4 Inkjet (1)
- E028.57** A3 Inkjet (1)
- E028.67** A4 Inkjet Textile (1)
- E028.68** A3 Inkjet Textile (1)
- E028.68** A4 Inkjet Foil - Gold/Silver (1)



E028.60

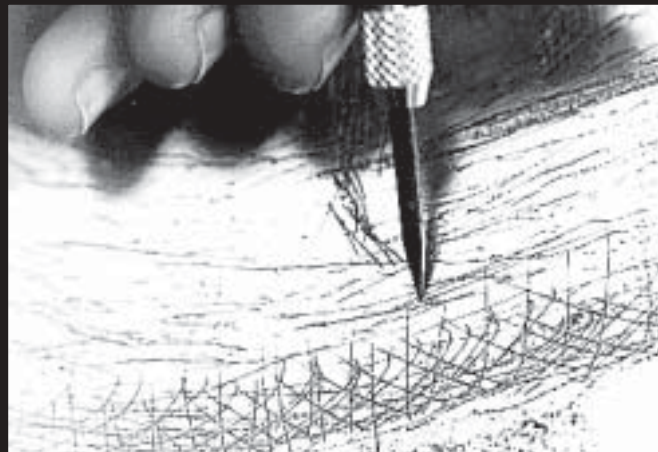
E028.64 Lazertran CD-ROM

CD-ROM detailing the above process in PDF format.

For the full range of water-based etching inks, see under Faust ink (Page 20) in this section, and the Caligo ink range (water-washup) full page ad (Page 3).

Note: For all oil-based inks, we recommend cleaning up with safflower oil and removing the last traces with either talcum powder or Preen spray, which are readily available from the supermarket and eliminate clean-up with solvents.

notes



etching

Product Listing 2010

etching plates - zinc

Zinc plates are softer than copper and more easily modified by scraping, burnishing and drypoint techniques. They may be etched in ferric chloride.

Note: Zinc and copper have increased 80% in price in recent years.

E001.00 Zinc Plate - (Premium quality)

1.2mm (18G) polished front. Plate for etching, editioning, etc. acid-proof paint on back. Cut from sheet sizes, it is plastic laminated to ensure a perfect and scratch free surface. Sold per piece.

Mill pack of 10

E001.13	50x100cm (20x40")
E001.15	50x50cm (20x20")
E001.14	33x50cm (13.5x20")
E001.50	25x25cm (10x10")
E001.60	20x25cm (8x10")
E001.61	20x12.5cm (5x8")
E001.62	12.5x12.5cm (5x5")
E001.63	10x12.5cm (4x5")

etching plates - photographic

E002 Zinc Plate - (Pre-sensitized)

1.2mm (18G) each sheet wrapped in black plastic. Develop zinc at 30⁰ heat in solvent free developer after approximately 10 minutes exposure to suntan lamp or 2 minutes in sunlight.

E002.1	50x100cm
E002.11	50x50cm
E002.2	200x250mm
E002.3	125x125mm
E002.4	100x125mm
E002.41	125x200mm

etching plates - copper

E004 Copper Plate - Engraving 1.2mm

Finest quality high silver content printing metal polished and plastic laminated for scratch-free surface. Etch with nitric acid or ferric chloride.

E004.1	600x900mm
E004.2	450x600mm
E004.3	450x300mm
E004.4	300x200mm
E004.7	300x300mm
E004.5	200x150mm
E004.8	150x150mm
E004.6	150x100mm
E004.9	150x300mm

E003.32 Copper Plate - Engraving 0.9mm

Finest quality metal, polished and laminated for scratch free surface.

E003.32	Engr Copper 600x900mm
E003.321	Engr Copper 450x600mm
E003.33	Lt/Wt Copper 300x450mm
E003.35	Lt/Wt Copper 300x200mm
E003.36	Lt/Wt Copper 200x150mm
E003.38	Lt/Wt Copper 150x100mm

plate cleaners

E009 Whiting Powder

Make a paste with ammonia to de-grease plates. 500gm pack.

E009.1 French Chalk (Talc)

Degrease hands when plate wiping and before paper handling - non-perfumed. 1/2kg bag.

E009.2 Cloudy Ammonia

Chemically de-greases metal. 500ml bottle.

E009.3 Charcoal Block

The oldest and fastest way to quickly polish metal plates without adding grease. Best done on a sink area with running water to remove black particles as they form. Measures 20 x 50mm cross-section x 150mm long.



E009.3

E010.2 Plate Polish

Brasso. Fast acting dual action of chemical and abrasive, but must be de-greased with whiting/ammonia paste after use. 250ml tin.



E010.2

E012 Snakestone Slips

Mild abrasive, use with oil using the flat, or end for small areas like scratches.

Note: For lithography, use with gum etch.

E012.1 Small 8mm (3/8"x4")

E012.2 Large 12mm (1/2"x4")



E012.1



E012.2

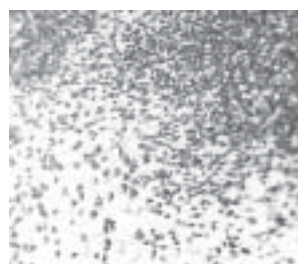
E013 Pumice Powder

Fast acting inexpensive grit. Use with ammonia to make paste; rub up with rag. Also used for inexpensive grit aquatint method. 1/2 kilo tin.

Carbide Grit

For polishing and aquatint. For rosinless aquatint, sprinkle the graining grit on to epoxy resin (Cat No E029.00). Varying depths of black/grey can be achieved by the depth of the sprinkling and the grade of the grit.

(See under Lithography Section - Graining Grit L275)



Carbide Graining Grit

etching grounds

Use for line etching and textures.

E015 Hard Ground - Heidelberg

Heat plate and rub line of ground in swirls evenly, follow up by a quick rollup with a soft roller to make ground even. Blacken if desired with soot from burning tapers. 40mm lump.



E015

E016 Hard Ground - French

Charbonnel hard ground.

E016 30mm - Black

E016.1 30mm - Transparent

E017 30mm - Lamour Deluxe



E016

E017.1 Hard Ground, Liquid - US

Graphics - The world's best selling liquid hard ground. Often used as a stopout varnish. 1 pint tin.

† *Only use with vapour mask.*

E018 Soft Ground - Heidelberg

Roll or dab on, pass through press against texture to reveal textures. With Japanese Gyokurya paper (Cat No P338.07B) draw into ground plate to get a soft stone litho effect. 40mm lump.



E018

E019 Soft Ground - French

Charbonnel. 30mm lump.



E019

E020.1 Soft Ground, Liquid - US

Graphics. 1 pint tin.

† Only use with vapour mask.



E017



E020.1

E019.1 Extra Soft Ground - French

Charbonnel. Pot.

E018.2 Extra Soft Ground - HFAW

Due to the diverse seasonal and climatic changes in Australia, we sell an old product used in the past to combat our unpredictable environment. It is extra soft ground in a glass jar and is excellent for cold conditions where normal lump soft ground will tend to be too hard for many aspects of soft ground techniques. Note that this ground almost melts in the jar during very hot weather. It remains the most sensitive ground for lithography with techniques such as thin tissue drawing soft ground etchings. Jar contains 30gm.



E018.2



acid resists and aquatint materials

E021 Bituminous Paint

E021.1 1/2lt tin

E021.2 1lt tin

E023.00 Krylon Plastic Spray Can

This product has become a popular American alternative to aquatint powders. The black plastic is very acid resistant and compares well to rosin.

† Only use with vapour mask.



E023

E024 Lump Rosin

Break up lumps in a muslin bag by rolling with drink bottle. Shake onto plate by flicking with finger holding bag 300mm above plate. 1/2kg bag.

E025 Rosin - Powdered

Stabilized against caking in hot weather. American. 1lb tin.

† Only use with vapour mask.

E026 Acid-Resist Pens

Draw over aquatint plate for Manor Noir with these fine-tipped pens. Best with ferric chloride. Also used in litho drawing up.



E027 Sugar Lift

Picasso method. So sensitive it will print a fingerprint. Same product as used by Hockney in "Rake's Progress" and Picasso, in his "Bullfight" series. Simply dilute with water to a painting consistency and paint onto aquatinted plate. 30ml bottle.



E027

E030 Photo Developer - Mitsui

For presensitized zinc plates - 1.2mm thickness. Clear water-based solution. Mix 1 : 5 with water. No fumes, clean up with cold water. 1lt bottle.

E031 White Ground

Paint or dabber onto clean or aquatinted plate in 1, 2 or 3 layers, warming dry. Has varying acid resistance dependant upon thickness. It will bite as you view it. 20gm bottle.



E031

stopout varnishes

E032.1 Bituminous Stop-Out - HFAW

Fast drying bitumen based varnish drying quickly to a hard film. (Turps. solution). 100ml bottle.

† Only use with gloves and vapour mask.

E033 Straw Hat Varnish

(Meths. solution). Inexpensive varnish. 250ml tin.

† Only use with gloves and vapour mask.

E034.1 Liquid Ground - Sennelier

A fast-drying traditional French etching ground which is supplied in a glass bottle. Ground is dissolved off in citrus solvent or petrochemical solvents such as mineral turpentine. Thin with pure turps. 60ml.



E034.1

E035.00 Stopout Ground - Workable

Medium drying speed varnish, the surface of which can be drawn into like a ground.

E035.02 100ml bottle

E035.03 200ml bottle

E036.01 Blonde Shellac Solution - Quality

For varnish and acid-resist solution. 250ml.

E036.11 Shellac Flakes

Use for making varnish and acid-resist solution.

E036.11 250g

E036.111 500g

solvents

E037.5 Organic Solvent

Made from squeezed orange peel, this offers a new solvent for people with allergies to petro-chemicals. Use in the same way as turps.

E037.5 4 litre tin

E037.6 250ml

E042.8 Safflower Oil

For use in areas where fumes and petro-chemical solvents are a problem After use, wipe up with a fresh clean rag and if an oil-free surface is required wipe over again with citrus solvent.

E042.82 4 litre tin

E042.84 250ml

E037.2 Mineral Turps

4lt container.

E037.10 Odourless Solvent - AS

Australian-made.

E037.10	100ml
E037.11	500ml
E037.12	1lt
E037.13	4lt

E037.90 Art Cleanup Solution (Citrus) - AS

Australian-made.

E037.90	500ml
E037.91	1lt

E038 Methylated Spirits

E038.1	1lt
E038.3	4lt

E040.64 Lacquer Thinners

Dangerous powerful solvent used in screen printing with lacquer stencils and screen cleaning. Use with care and adequate ventilation. Available in 1/2lt container.

† *Only use with vapour mask.*

E040.4 Gum (Pure) Turps

E040.4	500ml
E040.3	200ml
E040.6	1000ml

† *Only use with vapour mask.*

E042 Hand Cleaner - Citrus-based

This non-allergenic hand cleaner has been evolved which not only minimises problems with delicate skin, but may also assist in cleaning oil-based inks. Simply wipe up excess with safflower oil and old rags or paper towel, then remove the last thin layer of oil with this cleaner. Finally, wash off with hot running water.

E042.75	Hand cleaner pump - 5lt
E042.72	750ml refill (no pump)
E042.74	5lt

acids and mordants

Note: Only ferric chloride crystals can be shipped.

E044 Ferric Chloride Solution

Concentrated solution (for zinc and copper).

E044.00	1 litre
E044	2.5 litre
E045.01	4 litre
E044.01	20 litre

E045 Ferric Chloride Crystals

500g pack. Mix with 1lt of water to make up the etching solution. Store only in a glass container.

† *Only use with rubber gloves, safety glasses and a vapour mask when mixing up.*

E045.05 Copper Sulphate Etching Crystals

200g pack.

E045.04 Bordeaux Etching Powder

Simply mix with water for safe etching of zinc plate. 200g pack.

E043 Nitric Acid

Concentrated (for zinc and copper). 2.5lt glass bottle
Shop pick-up only.

acid trays

E046 White Propylene - Heavy Duty

E046.1	23x28 (9x11")
E046.2	28x33 (11x13")
E046.3	33x41 (13x16")
E046.4	43x53 (17x21")

E046.6 Acid Trays - Economy

E046.61	13x18 (5x7")
E046.62	20x25 (8x10")
E046.63	24x30 (10x12")
E046.64	30x40 (12x16")
E046.65	40x50 (16x20")
E046.66	50x60 (20x24")



E046.6

etching tanks

E047.12 Vertical Etch Tank

Vertical tank that which can be aerated with an inexpensive aquarium pump. The tank is designed for art colleges, fitting into existing or specially made bench tops and comes with a snug fitting lid. Aeration greatly speeds up etching times and easily increases throughput in printmaking departments, since the etching area is normally problematic in terms of time and efficiency. Maximum plate size capacity is 18" x 24". Made in USA.



E047.11

etching felt

A PRESSED WOOL

Roll width - 6 feet (1.2 metres).

*Sold per metre

E048 Etching Felt

1.5mm (1/16") - Used closest to plate as a size catcher, usually in conjunction with 3mm blankets.*

E048.1 School press blanket - small press
510x915 (20x36").

E049 Etching Felt

3mm (1/8") - Most commonly used; usually double or triple thickness.*

E049.1 School press blanket - small press
510x915 (20x36")



E049

E050 Etching Felt

6mm (1/4") - Thickest, like two blankets, often used in conjunction with thinner type, ie 1.5mm.*

E050.1 School press blanket - small press
510x915 (20x36")

E049.3 Etching Felt

4.8mm - 510x915.

E051 Etching Felt

9mm (3/8") - Used where maximum thickness is required, eg. embossing, collagraph.*

E051.1 Press Blanket - School

9mm. 510x915 (20x36") - Used where maximum thickness is required, eg. embossing, collagraph.*

B WOVEN BLANKETS

Best quality cloth; woven and then felted by a subsequent process. Will resist pulling out of shape, unlike the pressed types. The only felt to give mottle-free perfect blacks on aquatints. Editioners' quality felt. Washable with 'Softly'.

E053 Swanscloth - Heavy

4mm (5/16") x 915mm (36") wide. Normally used in twos or threes in conjunction with 1.5mm. Finest quality cloth. Sold per metre.

E052 Size Catcher

1.5mm x 900mm wide. Use closest to print paper to give perfect, clear blacks which are 'mottle'-free. Wash by hand with 'Softly'.

etching tools - drypoint

Use for drawing directly on to the plate or modifying/strengthening etched lines and gouging.

E055 Drypoint - Solid Carbide-Tipped

Tungsten carbide is just a little lower than diamond in hardness and much less brittle. The extreme hardness of tip greatly reduces friction on drypointing, especially on curved lines. American.

E055.2 Metal Pen with Pocket Clip

Carbide tip in thicker pen style with cap.



E055.3 Diamond Tip Drypoint

Diamond tip set in solid brass end; polished wooden handle. Great care must be exercised to avoid chipping brittle diamond end. As little as one drop is enough to chip the conical end. Protective plastic cap. American.

E056 Double-Ended Pin Vice

(With pocket clip). All metal, having a retractable tungsten carbide drypoint tip on one end and a very fine tapered etching needle on the other. The opposite ends of the points have small rounded ends which when polished up make excellent mini burnishers. This is the Rolls Royce of etching needles.



E056

E057 Double-Ended Drypoint

Devised by Whistler, for outdoor drypoints with excellent grip. Twist type solid steel shaft. Hardened ends can be sharpened to different points for line variations.



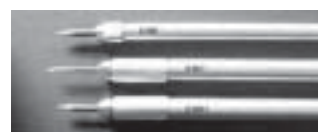
E057

E058.1 Pin Vice - Aluminium

Lightweight universal handle which takes both drypoint/etching needles, echoppe needles and screen stencil cutting blades. Comes with medium sized needle.

E059 Pin Vice - Economy

Small. Aluminium handle with hardened steel point. Inexpensive drypoint for schools and beginners. Comes with medium sized needle. American.



E059

E067.12 Soft Ground Needle

Oak handle; hardened steel ball-ended tool. Use with air mail paper for soft ground.



E067.12

E087.91 Wooden Handle - Echoppe

German.

E060.1 Pin Vice - Aluminium

Similar to Cat. No. E058.1, but comes with a thin hardened steel needle.



E060.1

E060.2 Hardened Steel Tips

Set of 12 thin needles to suit above pin vice.

E054.01 Pin Vice - Oak-Handled (Europa)

Adjustable pin vice of plated steel which takes a variety of pins and dentist drills. Comes with set of 2 needles.

E054.02 Pin Vice - Metal (Europa)

All metal tool with 5 double-ended points, including engraving burin.



E054.02

E057.5 Drypoint Tool - Double-ended (Lyons)

Tapered cork handgrip. This 'light in the hand' tool has excellent grip and balance.



E057.5

tools - arteina

A European toolmaker with interesting types of tools that have been tested out in European art colleges. The steel quality is good and many new ideas not seen before have been evolved. Prices are a special bonus, being quite economical for their size and quality.

E056.01 Double-Ended Pin Vice/4 Needles

A double ended pin vice complete with four hardened steel needles, ranging from fine to strong drypoint. Any two may be fitted at the same time.



E056.01

E062.11 Trowel Scraper

A new blade type of scraper that allows you to see the exact spot where the scraping is taking place. The hardened steel blades come in a selection of sizes, but are more for the slow gentle scraping used in mezzotint and aquatint and not for heavy work where large amounts of metal need to be taken out.

E062.11 No.1 - Narrow

E062.12 No.2 - Medium

E062.13 No.3 - Wide



E062.11

E066.061 Needle

Set in metal-ended wood handle. These series of different size needles are similar to the Italian tools we have stocked for many years, except that Arteina have made them at a much lower price.

E066.061 3mm - Thick

E066.062 2.5mm - Medium

E066.063 2mm - Fine

E066.064 1.5mm - Very Fine



E066.061

E077.2 Burnisher - Pin Vice Holder

Set of five different shaped burnishers that fit the Arteina pin vice holder.



E077.2

E080.031 Roulette - Large Diameter Wheel

E080.031 10x10 mm - Coarse

E080.032 10x10mm - Medium



E080.031

E080.034 Roulette - Normal Diameter Wheel

E080.034 10x5mm - Coarse

E080.035 10x5mm - Medium



E080.034

E080.037 Roulette - Small Diameter Wheel-Dot

E080.037 5x5mm - Coarse

E080.038 5x5mm - Fine



E080.37

E080.039 Roulette - Small Diameter Wheel-Line

E080.039 5x5mm line - Fine

E080.040 5x5mm line - Course



E080.039

tools - double-ended

Use for burnishing, scraping, etc.

E061 Drypoint/Flat Burnisher

Whistler type with twist handle. American.



E061

E062 Drypoint/Curved Burnisher

Hardened steel, spoon burnisher end. American.



E062

E062.1 Drypoint/Flat Burnisher

American.

E063.00 Burnisher/Scraper

45° triangled scraper with burnisher on opposite end. American.

E063.01 Burnisher/Scraper

Curved spoon burnisher/three square hollow scraper. Possibly the world's finest multi-function tool. Beautifully balanced. Tape scraper end and use as drypoint tool as well. German.



E063.01

E063.021 Burnisher/Scraper - Economy

Similar to the famous German tool, this is specifically made for NWPS in Europe from quality hardened steel. It comprises a triangular scraper at one end and a curved burnisher at the other. Unbeatable value.



E063.021

E063.01 Drypoint/Scraper

E064 Burnisher/Needle

Fine taper-ground needle of hardened steel with flat burnisher on opposite end. German.



E064

E064.1 Burnisher/Burnisher

Combination tool of spoon and flat burnisher in the one tool, useful when doing a lot of burnishing of small areas, ie. aquatints or mezzotints. German.

E065.2 Drypoint - Solid Steel

American. (Balance tool).



E065.2

tools - needles

E066.01 Etching Needle - Heavy Duty

Traditional. High quality ground and hardened steel tip topped with polished 70mm wooden handle. Our largest selling needle with both lightness in the hand and strength of point. American.

E067 Etching Needle - Pencil

(Pencil type). Fine steel tip set in wooden handle. American.

E067.1 Etching Needle - School

Inexpensive tapered needle with ferrule to minimise splitting of wood end. For metal, plastic and paper drypoint plates. Largest selling school tool.



E067.1

E068.1 Etching Needle (School type)

Inexpensive fine needle set in wooden handle. Cork protector.



E068.1

E068.2 Etching Needle - Double-Ended

Double-ended needle with wooden handle. Thick and thin needles; one for etching, one for drypoint.

E068.4 Etching Needle - German

Quality solid European etching needle with plastic handgrip.



E068.4

tools - triangular scrapers

Use for erasing lines and tints.

E069 Flat Scraper

Three-square with hardened blade in wooden handle. American.



E069

E069.1 Mini Scraper

Small three-square end set into small wooden handle.

E070 Hollow Scraper

Three-square with hardened fluted blade in wooden handle. American.



E070

E072.5 Scraper - HFAW, Economy

Inexpensive large size triangular hollow scraper. Blade is made from hardened steel, measuring 75mm long with 100mm black handle and brass ferrule.



E072.5

tools - burnishers

Note: Must be used with machine oil, NOT plate oil.

E073 Straight Burnisher

Tempered polished steel blade in wooden handle. American.



E073

E073.1 Ball Burnisher

Small hardened 2mm ball set on small shaft for micro burnishing small areas, ie. mezzotint etc. American.



E073.1

E076 Curved Burnisher

Tempered polished steel blade in wooden handle. The best-selling burnisher. American.



E076

E076.1 Mini Curved Burnisher

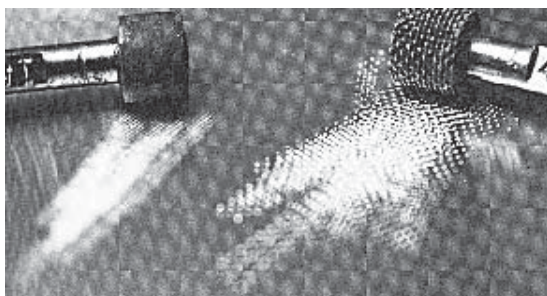
Small curved blade set into small handle.



E076.1

tools - roulette wheels, drum

Use for direct surface texturing. Originally for repairing mezzotint and for tone strengthening of small areas, backgrounds.



Line pattern

Dot pattern

E079.01A Drum Roulette - Dot

Barrel type wheel in heavy steel holder set into robust wooden handle. Available in various grades of line and dot patterns. Measures 8x8mm. American.

E079.01A1 45

E079.01A2 100

E079.01A3 150



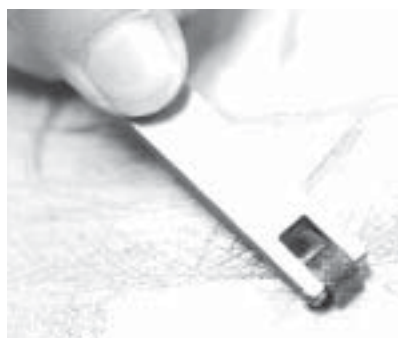
E079.01A

E079.01B Drum Roulette - Line

E079.01B1 45

E079.01B2 100

E079.01B3 150



E079.01B

E079.05 Single Row Star Roulette

Tooth roulette for single row of dots - resembles stipple line engraving. American



E079.05

tools - roulette wheels, bent arm

E080.1 Roulette

Angled shaft and 5mm wide hardened wheel. Shaft set in wooden handle. Available in various grades of line and dot patterns. American.

Line pattern

E080.1A1 45

E080.1A2 85

E080.1A3 100

E080.1A4 150

Dot pattern

E080.1B1 45

E080.1B2 85

E080.1B3 100

E080.1B4 150



E080.1B

E080.2 Roulette

Solid tungsten carbide long tapered roll (one grade). Irregular dot. American.



E080.2

E080.1 Roulette - Jumbo

85 dot.

tools - mezzotint rockers

Note: These require finish honing.



E081.1

E081.1 Mezzotint Rocker - 25mm

Hand-made from quality tool steel; hardened and tempered. Resharpenable, economic. Available in various grades of lines per inch. American.

E081.11 45

E081.12 85

E081.13 100

E081.14 150

E081.20 Mezzotint Rocker - 50mm

85 line.

E081.2 Mezzotint Rocker - 60mm

Heavy duty model drilled ready for weight fit-up kit for faster mezzotinting. Main selling tool for art colleges. Available in various grades of lines per inch. American.

- E081.21 45
- E081.22 85
- E081.23 100
- E081.24 150



E081.2

E082.00 Mezzotint Weight

Kit for above tool.

E081 Mezzotint Rocker - Extra Wide

A 100mm rocker for experienced users. Whilst difficult initially for the novice to use, it offers a very fast tinting rate for large plates. It is approximately 50% more expensive than the 50mm rocker. Stocked in 100 and 150 lines per inch grades (coarse and medium) though any grade may be ordered in on special request. American.

- E081.4 45 line - 4"
- E081.5 85 line - 4"
- E081.6 120 line - 4"



E081.4

E081.7 Mezzotint Rocker - 85 line

Available in two sizes.

- E081.7 5"
- E081.6 6"

tools - engraving

Note: These require finish honing.

E083 Burin - Bent

Lozenge or square type for engraving zinc, copper, perspex and end grain wood. Often used to locally strengthen etched lines. Available from fine to coarse blades (2, 3, 4, 6, 8, 12). Mushroom wooden handle. American.

- E083A Lozenge
- E083B Square



E083A

R176.05C Elliptical Tint Tool

Has a tear drop end and a sharp blade producing lines of width dependent upon tool angle. Available in 3 widths - fine, medium and thick. Mushroom handle.

- R176.05C No. 3
- R176.05D No. 5
- R176.05E No. 10



R176.05C

E084 Burin - Straight

As above, but without the bend. Long straight blade of the European style. German.



E084

E084.01 Halftone Rake

Available in two grades.

- E084.01 Fine
- E084.011 Medium

E084.02 Multi-line Scratchboard Tool

Double-ended. Available in three sizes - #25, #45, #65.

E084.03 Stippling Tool

For patterning.

E085.01 Multiple Lining Tool

Parallel-lined bent shaft type with wooden handle for parallel lines and cross-hatching. Available in medium and fine grades.



E085.01

E088 Drawtools - Plate Cutters

Run along steel edge clamped to plate to score metal; bend on table edge and snap off. Hardened steel blade, wooden handle. American.



E088

tools - grifhold (american)

E087.79 Swivel Cutter

For easy cutting out of stencils without having to swivel hand. Nylon bearing and hardened cutting edge.



E087.7

E087.8 Blade Ends

Replacement swivel blade ends for the above cutter.



E087.8

E087.07 Craft Knife

This heavy duty cutting knife may be used with both hands in the vertical Japanese cutting style. A protective clear plastic cover is provided to snap over the blade for safety when not in use.



E087.81

E087.08 Blades for Craft Knife

Pack of 5 spare blades for above knife.

tools - magnifiers

E087.11 Linen Tester - Loupe

Magnifier with fixed focus and clear plastic base for maximum light.



E087.11



E087.12

E087.12 Folding Magnifier - Large

Plastic with large lens.

etching sundries and aids

E091 Bevelling File

Coarse tooth. Fast cutting bastard files. 250 mm (10").



E091

E093 Wax Tapers

Long wax tapers for blackening etching grounds. Packed in box of 12. 250mm.



E093

ink application and wiping

E098.1 Leather Dabber (Inking)

80mm diameter on wooden base. Soft, double sueded deerhide pulled over layers of etching felt.



E098.1



E099

E099 Silk Dabber

As above, except for silk covering. For applying grounds with irregular pattern.

E101 Inking Brush

Stiff 25mm diameter stipple brush for inking up plates quickly; minimizes ink waste. Excellent when used with Faust blacks.



E101

E103.01 Wipers - Plastic (Arteina)

An inexpensive wiping device for etching plates that does not scratch the plate but can be re-used over and over again. These double-sided plastic wiping blades are brightly coloured to prevent accidental throw-out during clean-up time. The centre of the wiper has a reinforced rib to minimise the wiper bending during use, but allows the blade to flex along its length to perfectly match the plate contour. Additionally, these are great for assisting in ink clean-up off the slab and rollers, by holding the blade against the roller as the inked roller is turned against it.

E104 Tarlatan

Stiff sized with open weave for maximum ink retention. 1000mm wide. Discount on rolls listed below.

E104.01 Coarse - 25 metre roll

E104.1 Coarse - per metre

E104.4 Fine - 25 metre roll

E104.3 Fine - per metre



E104.1

E105.1



E104.1

E104.2

E105.1

E105.1 Cheesecloth

For soft wiping. 900mm (36") wide pure cotton. Sold per roll with 20% discount, or per metre.

E105.1 Metre

E105.2 Roll - 90 metre

E106 Varnish Brush - Economy

Black hair and plastic handle suitable for painting on all varnishes and grounds. Securely fitted hair.

E106.4 Small - 35mm

E106.5 Medium - 50mm



E106.4

protective and safety equipment

E107.1 Cotton Gloves - PVC Coated

Completely acid-proof for hand protection while mixing acids, plate wiping and mixing inks.



E107.1

E107.21 Cotton Gloves - Thick

Knitted cotton. For handling hot plates and paper without grease/ink marks.



E107.21

Note: When ordering gloves, please specify small, medium or large size, if indicated in descriptions below.

E107.3 Gloves - Surgical

Tight fitting surgical gloves for use where perfect touch is required. Small or large size. Packs of 100.

E107.3A Cotton Gloves - Thin

Fine cotton, for handling paper and gold leaf. Per pair.

E108.1 Safety Glasses

Clear glass with side shields for eye protection when mixing acid baths and immersing plates in acid.



E108.1

E108.9 Dust Mask

For protection from harmful dust inhalation. Disposable type. Deluxe version with foam nose seal and air-out valve, with double head-band for best fit/seal.



E108.9

E108.3 Anti-Vapour Half-Mask

Special sealing face mask with valve action to ensure breathing intake goes through the activated charcoal filters. Should be used for all applications of etching varnishes, liquid grounds and rosin dusting.

E108.41 Single Cartridge Unit

E108.4 Vapour Mask Cartridges

Spare cartridges for above mask. Replace after every few months use.

E108.2 Anti-Vapour Mask

Double cartridge version of face mask for easier breathing.



E108.3

E107.52 Apron - Calico

White apron with three pockets, made from tough weaving calico.

E107.53 Apron - PVC

Black coated canvas apron for acid splash resistance and solvent handling where water-proofing is required.

E107.53 Large

E107.54 Extra Large (Neck to Feet)

etching inks - hfaw

An extensive range of European etching inks made to a traditional formula and triple-roll milled to give the finest dispersion of the pigment in the linseed oil ink vehicle. The inks are packaged in no-waste 150ml durable metal tubes, as well as the traditional tins, and are now available in new 'recap' 300ml cartridges.

Note: This brand of cartridge may also be fitted with on/off valves to accurately disperse ink and minimise waste.



series 1

150ml tubes

- E109.411** Soft Black
- E109.412** Warm Black
- E109.413** Blue Black
- E109.414** Intense Black
- E109.415** Aquatint Black
- E109.421** Raw Sienna
- E109.422** Raw Umber
- E109.423** Burnt Sienna
- E109.424** Burnt Umber
- E109.425** Red Ochre
- E109.426** Yellow Ochre
- E109.427** Sepia
- E109.429** Extender

250g tins

- E109.511** Soft Black
- E109.512** Warm Black
- E109.513** Blue Black
- E109.514** Intense Black
- E109.515** Aquatint Black
- E109.529** Extender

500ml tins

- E109.591** Soft Black
- E109.592** Warm Black
- E109.593** Blue Black
- E109.594** Intense Black
- E109.595** Aquatint Black
- E109.596** Extender
- E109.597** Opaque White



series 2

150ml tubes

- E109.428** Van Dyke Brown
- E109.4291** Opaque White

250g tins

- E109.516** Opaque White
- E109.521** Raw Sienna
- E109.522** Raw Umber
- E109.523** Burnt Sienna
- E109.524** Burnt Umber
- E109.525** Red Ochre
- E109.526** Yellow Ochre

series 3

150ml tubes

- E109.431** Light Green
- E109.433** Dark Green
- E109.434** Prussian Blue
- E109.435** Orient Blue
- E109.436** Indian Yellow
- E109.439** Cerulean Blue
- E109.440** Turquoise
- E109.441** Viridian Green
- E109.442** Thalo Green

250g tins

- E109.527 Sepia
- E109.528 Van Dyke Brown
- E109.531 Light Green
- E109.532 Mid Green
- E109.533 Dark Green
- E109.534 Prussian Blue
- E109.535 Orient Blue
- E109.536 Indian Yellow
- E109.537 Deep Yellow
- E109.538 Ultramarine Blue
- E109.539 Cerulean Blue Hue
- E109.540 Turquoise
- E109.541 Viridian Green
- E109.542 Thalo Green
- E109.571 Naphthol Red

series 4

150ml tubes

- E109.461 Lemon Yellow
- E109.437 Deep Yellow
- E109.462 Golden Yellow
- E109.464 Vermillion Red
- E109.465 Intense Blue
- E109.466 Crimson Red
- E109.468 Red Madder
- E109.470 Carmine Red
- E109.471 Naphthol Red
- E109.468 Quinacridone Violet

250g tins

- E109.561 Lemon Yellow
- E109.562 Golden Yellow
- E109.564 Vermillion Red
- E109.565 Intense Blue
- E109.571 Blue - Concentrated
- E109.566 Crimson Red
- E109.567 Quinacridone Violet
- E109.568 Dioxazine Purple
- E109.569 Red Madder
- E109.570 Carmine Red

series 5

150ml tubes

- E109.481 Deep Scarlet
- E109.482 Golden Yellow
- E109.483 Primrose Yellow
- E109.484 Warm Red
- E109.496 Dioxazine Purple

250g tins

- E109.581 Deep Scarlet
- E109.582 Golden Yellow
- E109.583 Primrose Yellow
- E109.584 Warm Red

300mm cartridges

- E109.301 Soft Black
- E109.302 Warm Black
- E109.303 Blue Black
- E109.304 Intense Black
- E109.305 Aquatint Black
- E109.306 Opaque White
- E109.308 Burnt Sienna
- E109.309 Burnt Umber
- E109.310 Yellow Ochre
- E109.311 Sepia
- E109.313 Mid Green
- E109.314 Prussian Blue
- E109.328 Raw Sienna
- E109.316 Ultramarine Blue
- E109.317 Turquoise
- E109.318 Thalo Green
- E109.315 Indian Yellow
- E109.319 Lemon Yellow
- E109.322 Vermillion Red
- E109.327 Warm Red
- E109.312 Extender

E109.350 Cartridge Valve

Replacement part for cartridge gun, which has screw-on spout and optional instant 'shutoff' valve.



E109.301

etching inks - graphics (american)



E109.00

Available in 1/4lb tubes, 1 lb tins and cartridges

Cartridges are now the most convenient way for art colleges to use etching inks where the pigments are packaged into metal-lined cartridges to minimise waste for class use. To operate, set into regular caulking gun available from NWPS and squeeze through the plastic nozzle.

Note: See the Heidelberg etching ink cartridges (300ml) with resealing screw caps (E109.301).



- E110.01 **514 Black** 1/4lb tube
- E110.02 **514 Black** 1lb tin
- E109.01 **514 Black** 1lb cartridge
- E111.01 **Blue Black** 1/4lb tube
- E111.02 **Blue Black** 1lb tin
- E109.02 **Blue/Black** 1lb cartridge
- E112.01 **Vine Black** 1/4lb tube
- E112.02 **Vine Black** 1lb tin
- E109.07 **Vine Black** 1lb cartridge
- E113.02 **Intense Black** 1lb tin
- E114 **Stiff Frankfurt Black** 1lb tin
- E115.01 **Sepia** 1/4lb tube
- E115.02 **Sepia** 1lb tin
- E109.03 **Sepia** 1lb cartridge
- E116.01 **Raw Umber** 1/4lb tube
- E0116.02 **Raw Umber** 1lb tin.
- E117.01 **Burnt Umber** 1/4lb tube
- E117.02 **Burnt Umber** 1lb tin
- E109.12 **Burnt Umber** 1lb cartridge
- E118.01 **Raw Sienna** 1/4lb tube
- E118.02 **Raw Sienna** 1lb tin
- E119.01 **Burnt Sienna** 1/4lb tube
- E119.02 **Burnt Sienna** 1lb tin
- E109.05 **Burnt Sienna** 1lb cartridge
- E120.01 **Yellow Ochre** 1/4lb tube
- E120.02 **Yellow Ochre** 1lb tin
- E109.10 **Yellow Ochre** 1lb cartridge
- E121.01 **Cadmium Red Light** 1/4lb tube
- E121.02 **Cadmium Red Light** 1lb tin.
- E109.041 **Cadmium Red Light** 1lb cartridge
- E121.03 **Cadmium Red Dk** 1/4lb tube
- E121.04 **Cadmium Red Dark** 1lb tin
- E122.01 **Alizarin Crimson** 1/4lb tube
- E122.02 **Alizarin Crimson** 1lb tin
- E109.11 **Alizarin Crimson** 1lb cartridge
- E123.01 **Dairylide Yellow** 1/4lb tube
- E123.02 **Dairylide Yellow** 1lb tin
- E109.43 **Dairylide Yellow** 1lb cartridge
- E124.01 **Thalo Blue** 1/4lb tube
- E124.02 **Thalo Blue** 1lb tin
- E109.042 **Thalo Blue** 1lb cartridge
- E125.01 **Viridian Green** 1/4lb tube
- E125.02 **Viridian Green** 1lb tin
- E109.08 **Viridian Green** 1lb cartridge
- E120.05 **Paynes Grey** 1/4lb tube
- E126.01 **Cadmium Orange** 1/4lb tube
- E126.02 **Cadmium Orange** 1lb tin
- E126.03 **Ultramarine Blue** 1/4lb tube
- E126.04 **Ultramarine Blue** 1lb tin

- E127.01 **White** 1/4lb tube
- E127.02 **White** 1lb tin
- E109.09 **White** 1lb cartridge
- E128.01 **Clear Etching Base** 1/4lb tube
- E128.02 **Clear Etching Base** 1lb tin
- E129.011 **Silver** 1/4lb tube
- E129.01 **Silver** 1lb tin
- E129.021 **Gold** 1/4lb tube
- E129.02 **Gold** 1lb tin
- E129.03 **Graphite Soft Grey** 1lb tin

E109.44 Cartridge Caulking Ink Gun

Use for above inks.

etching inks - faust (oil-based)

Faust are a small American family company who have been making ink for three generations and have become renowned for their unique buttery consistency etching inks. They are the easiest inks to wipe, making them a favourite especially in the cold winter months. The large 100cc tubes have become particularly popular due to their excellent combination of tight packed hand tubing and economy.



E130



E130.03

Available in 100cc tubes and 1 lb tins

- E130.01 Jet Black 100cc tube
- E130.02 Jet Black 1lb tin
- E130.03 Warm Black 100cc tube
- E130.04 Warm Black 1lb tin
- E130.05 Cadmium Yellow 100cc tube
- E130.06 Cadmium Yellow 1lb tin
- E130.07 Thalo Blue 100cc tube
- E130.08 Thalo Blue 1lb tin
- E130.09 Cadmium Red Light 100cc tube
- E130.10 Cadmium Red Light 1lb tin
- E130.11 Rose Madder 100cc tube
- E130.12 Rose Madder 1lb tin
- E130.13 English Red 100cc tube
- E130.14 English Red 1lb tin
- E130.15 Dioxazine Violet 100cc tube
- E130.16 Dioxazine Violet 1lb tin
- E130.17 Ultramarine Blue 100cc tube
- E130.18 Ultramarine Blue 1lb tin
- E130.19 Sepia 100cc tube
- E130.20 Sepia 1lb tin
- E130.21 Burnt Umber 100cc tube
- E130.23 Burnt Umber 1lb tin
- E130.24 Raw Umber 100cc tube
- E130.25 Raw Umber 1lb tin
- E130.26 Burnt Sienna 100cc tube.
- E130.27 Burnt Sienna 1lb tin.
- E130.28 Raw Sienna 100cc tube
- E130.29 Raw Sienna 1lb tin
- E130.30 Ochre 100cc tube
- E130.31 Ochre 1lb tin
- E130.32 White 100cc tube
- E130.33 White 1lb tin
- E130.34 Transparent Base 100cc tube
- E130.35 Transparent Base 1lb tin
- E130.37 Cadmium Golden Yellow 100cc tube
- E130.38 Cadmium Golden Yellow 1lb tin
- E130.39 Prussian Blue 100cc tube

etching inks - charbonnel (french)

Charbonnel inks are renowned throughout the world for their blacks, clear colours and pigment quality. Whilst these inks are the most expensive, they still have the greatest range of blacks and colours.
Note: Series no. occurs in brackets ().



E131.01

black inks

- E131.01 **Soft Black (Doux)** (1) Easiest wiping of the Charbonnel blacks. (For line only). 200ml
60ml
- E131.02 **Soft Black (Doux)** (1) 400ml
- E133.01 **RSR Black** (1) Lamp black pigment base; deepest black for fine lines, engraving or drypoint. 200ml
- E133.02 **RSR Black** (1) 400ml
- E134 **71303** (2) Warm black made from organic Frankfurt black pigment. 200ml
- E134.02 **Black 71303** (2) 400ml
- E134.03 **Black Luxe C** (2) Black midway between 55985 and Doux. Combination of ease of wiping with dense black on aquatint. 200ml
- E134.04 **Black Luxe C** (2) 400ml
- E135.01 **Black 55985** (2) Aquatint black. Very stiff black which gives mottle-free blacks under all conditions. 200ml
- E135.02 **Black 55985** (2) 400ml
- E135.021 **Black 55985** (2) 1kg tin
- E131.03 **Black F66** (1) Easy wiping ink for line and aquatint. 200ml
- E131.04 **Black F66** (1) 400ml
- E134.05 **Black 55981** (2) Aquatint black, not quite as sticky as 55985, making for easier wiping of large aquatinted plates. 200ml
- E134.05 **Black 55981** (2) 400ml
- E136.02 **Paynes Grey** (1) 200ml

extender

- E136.282 **White Transparent Lake RS** (3) Clear base extender. 400g
- E136.283 **White Transparent Lake** (3) 60ml

white inks

- E136.272** Covering White (2) 200ml
E136.273 Covering White (2) 60ml
E136.263 Titanium Snow White (2) 200ml
 \$27.00
E136.271 White RS (2) Zinc-based white. Softer
 less opaque. 200ml

gold and silver inks

- E136.012** Gold (4) 200ml
E136.0131 Gold (4) 60ml
E136.013 Silver (4) 200ml
E136.014 Silver (4) 60ml

coloured inks

Prices of each colour vary upon the cost of the pigment.

- E136.011** Primrose Yellow (4) 200ml
E136.012 Primrose Yellow (4) 60ml
E136.021 Permanent Yellow Lake (4)
 200ml
E136.022 Lemon Yellow (4) 200ml
E136.023 Indian Yellow (4) 200ml
E136.0231 Indian Yellow (4) 60ml
E136.024 Deep Yellow (3) 200ml
E136.025 Deep Yellow (3) 60ml
E136.031 Apricot Yellow (4) 200ml
E136.041 Warm Red (5) 200ml
E136.042 Warm Red (5) 60ml
E136.051 Cardinal Red (4) 200ml
E136.052 Cardinal Red (4) 60ml
E136.063 Carmine (5) 200ml
E136.065 Vermillion Red (4) 200ml
E136.066 Vermillion Red (4) 60ml
E136.068 Ruby Red (6) 200ml
E136.071 Madder Lake (5) 200ml
E136.074 Geranium Red (4) 200ml
E136.081 Solferino Violet (6) 200ml
E136.091 Permanent Violet (6) 200ml
E136.101 Concentrated Blue (6)
 200ml
E136.103 Ultramarine Blue (2) 200ml
E136.104 Ultramarine Blue (2) 60ml
E136.111 Ocean Blue (4) 200ml
E136.121 Prussian Blue (3) 200ml
E136.122 Prussian Blue (3) 60ml
E136.131 Orient Blue (3) 200ml
E136.132 Orient Blue (3) 60ml
E136.141 Cerulean Blue (2) 200ml
E136.154 Turquoise Blue (2) 200ml
E136.152 Cobalt Blue (2) 200ml

earth coloured inks

- E136.161** Perm Viridian Lake (4)
 200ml
E136.162 Perm Viridian Lake (4) 60ml
E136.171 Emerald Green (4) 200ml
E136.181 Sap Green (4) 200ml
E136.191 Spring Green (4) 200ml
E136.201 Yellow Ochre (1) 200ml
E136.202 Yellow Ochre (1) 60ml
E136.211 Red Ochre (1) 200ml
E136.221 Bistre (2) 200ml
E136.231 Burnt Sienna (2) 200ml
E136.232 Burnt Sienna (2) 60ml
E136.233 Burnt Umber (2) 200ml
E136.236 Raw Umber (2) 200ml
E136.2361 Raw Umber (2) 60ml
E136.237 Raw Sienna (2) 200ml
E136.241 Van Dyck Brown (3) 200ml
E136.251 Warm Sepia (2) 200ml
E136.252 Warm Sepia (2) 60ml
E136.531 Sanguine (2) 200ml
E136.532 Sanguine (2) 60ml
E136.250 Raw Sepia (2) 200ml

400ml tins

Above colours available in 400ml tins.

- E131.1** Series 1
E131.2 Series 2
E131.3 Series 3
E131.4 Series 4
E131.5 Series 5
E131.6 Series 6

etching inks - water-based**E130.41 Faust Aqualine Etching Ink**

Two years in the laboratory produced the world's first gum-based etching ink which gives excellent results, and is rated as good as the regular Faust etching ink, both in print intensity and wiping characteristics. Since the ink contains no driers, there is no skinning waste. We suggest applying the ink with a large stencil brush (E101) then removing it with an Arteina wipe (E103.01). A light wipe with tarlatan/cheesecloth, then print dry onto a soft paper such as the economically-priced 150g Hahnemuhle at \$1.10/sheet.(P331.10). Normal etching paper may be used, but this must be lightly dampened as the ink is water-based.

- E130.422** Carbon Black 250ml
E130.421 Carbon Black 4oz
E130.43 Bright Red 250ml
E130.431 Bright Red 4oz
E130.45 Red Oxide 250ml
E130.451 Red Oxide 4oz
E130.51 Diarylide Yellow 250ml
E130.511 Diarylide Yellow 4oz

- E130.44 Yellow Oxide 250ml
- E130.441 Yellow Oxide 4oz
- E130.47 Ultramarine Blue 250ml
- E130.471 Ultramarine Blue 4oz
- E130.48 Thalo Blue 250ml
- E130.481 Thalo Blue 4oz
- E130.46 Quinacridone Magenta 250ml
- E130.461 Quinacridone Magenta 4oz
- E130.50 Diarylide Orange 250ml
- E130.501 Diarylide Orange 4oz
- E130.49 Thalo Green 250ml
- E130.491 Thalo Green 4oz
- E130.52 Raw Umber 250ml
- E130.521 Raw Umber 4oz
- E130.53 Titanium White 250ml
- E130.531 Titanium White 4oz
- E130.54 Extender Base 250ml
- E130.541 Extender Base 4oz

etching inks - oil-based, water-washup

E136.700 Caligo Safewash Etching Ink

Caligo Safewash etching inks have been available throughout Europe in recent years. They offer fast non-toxic cleanup in warm soapy water. Available in both tubes and tins.



E137.700

150ml metal casing

- E136.701 Carbon Black
- E136.702 Brown Black
- E136.703 Blue Black
- E136.704 Cyan Blue
- E136.706 Prussian Blue
- E136.707 Sepia
- E136.708 Pthalo Green
- E136.710 Naphthol Red
- E136.711 Magenta
- E136.712 Rubine Red
- E136.713 Carb. Violet
- E136.714 Opaque White
- E136.715 Extender
- E136.716 Hansa Yellow
- E136.717 Diarylide Yellow
- E136.718 Yellow Ochre

250ml tins

- E136.800 Carbon Black
- E136.785 Brown Black (Warm)
- E136.786 Blue Black (Cool)
- E136.803 Ultramarine Blue
- E136.805 Cyan (Ocean) Blue
- E136.806 Prussian Blue
- E136.807 Sepia
- E136.808 Pthalo Green
- E136.802 Naphthol Red
- E136.809 Magenta
- E136.810 Rubine (Madder) Red
- E136.811 Dioxazine (Carb.) Violet
- E136.812 Hansa/Arylide Yellow
- E136.813 Diarylide Yellow
- E136.718 Yellow Ochre
- E136.804 Opaque White
- E136.715 Extender

500ml tins

- E136.900 Carbon Black

ink modifiers

E137.01 Easy Wipe Compound

Makes wiping the stiffer hot plate inks easier without altering the consistency of the ink (as plate oils do). For all brands of etching ink.

- E137.01 1/4lb tube
- E137.02 1lb tin



E137.01

E139 Plate Oil - Graphics

Available in 100ml bottles and 1 pint tins.

- E139.011 Light - 100ml bottle
- E139.021 Light - 1 pt tin
- E139.012 Medium - 100ml bottle
- E139.023 Medium - 1 pt tin
- E139.013 Heavy - 100ml bottle
- E139.022 Heavy - 1 pt tin



E139.021

E140 Magnesium Carbonate

Ink stiffener and fluffing up agent. Mostly used for lithography inks. 200g tin.

E141 Alumina Hydrate

Colourless extender which lengthens ink flow and tack. 500g tin.

E143 Anti-Skinning Spray

Aerosol can. Spray over ink surface to prevent skin formation.

E144.15 Glass Muller

Make your own inks by pouring a 20¢ diameter circle of light plate oil into a circle of pigment, mixing quickly with a small spatula, then grinding for about five minutes with a glass or stainless steel muller, preferably on a slab of roughened glass or slate. Finally, add a little heavy plate oil or Easy Wipe to body up the ink.



E144.15

rollers for printmaking

E147 Soft Roller - Deluxe Quality

These premium quality Japanese rollers come with precision made thick chromed steel handles and screwed lacquered wood handles. Clean up with paper towel or cloth. Available in the following sizes:

- E147.01** Full Roller - 30mm (1.5x1")
- E147.01A** Full Roller - 100mm (1.5x4")
- E147.01B** Full Roller - 116mm (2x6")
- E147.01C** Full Roller - 203mm (2x8")
- E147.01D** Full Roller - 250mm (2x9.5")



E147

E147.03 Spare Rollers - Deluxe Quality

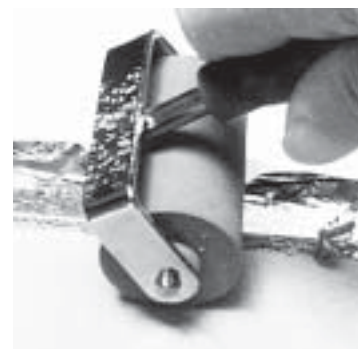
Japanese.

- E147.03** 100mm (4")
- E147.05** 150mm (6")
- E147.07** 200mm (8")
- E147.08** 250mm (9.5")

E147.10 Soft Roller - Speedball

Polyurethane soft ground roller with nylon bearing. 30mm diameter. American.

- E147.09** 1.5"
- E147.10** 2"
- E147.10A** 3"
- E147.11** 4"
- E147.11B** 4" (Plastic handle)
- E147.12** 6"



E147.10

E147.21 Foam Roller - Speedball

4" wide. Dense foam, ideal for craft, Lazertran process, etc. American.

E151.08 Deluxe Hard Roller - Europa

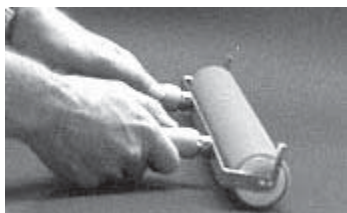
European-made roller in ground finished polyurethane with stand and lacquered wooden oak handle. Ensures extra fast cleanup and heat resistance. 50mm diameter.

- E151.07** 60mm
- E151.04** 120mm
- E151.06** 150mm
- E151.05** 200mm
- E151.73** 300mm (Two handles)

* Comes with two handles for stability



E151.08



E151.73

E151.31 Economy Brayer - Hard (Wire Handle)

European-made hard brayers. 30mm diameter.

- E151.41 60mm
- E151.31 90mm
- E151.32 120mm
- E151.33 150mm

E151.11 Deluxe Roller - Oak Handle

Quality roller with wooden oak handle. Hinged double frame for double roll-up pressure. 300mm.

E151.08 Editioning Roller - Thin

Thin editioning roller in finished polyurethane. 48mm diameter.

- E151.20 10mm wide
- E151.21 15mm wide
- E151.22 20mm wide
- E151.23 25mm wide



E151.08

hard rollers - economy

E149 Black Hard Roller - Plastic Handle

Black hand roller with hard rubber hose pushed onto a steel spindle with red plastic handle. 25mm (1") diameter.

- E149.01A Hand roller - 50mm (1x2)
- E149.01B Hand roller - 100mm (1x4)
- E149.02 Hand roller - 165mm (1x6)
- E149.03 Hand roller - 200mm (1x8)



E149

brayers - professional quality

E152.21 Cast Stand Alum. Frame Brayer - Heidelberg

The roller uses a cast aluminium handle, incorporating a stand. The rollers are made from premium quality gravure rubber in a medium Duo hardness, but in a diameter of 65mm. The rubber is cast onto 3mm metal tube and the roller runs on nylon bearings machined out to turn on steel pins. They come in a variety of widths for all applications.

- E152.1 100mm (4")
- E152.2 150mm (6")
- E152.3 200mm (8")
- E152.4 260mm (10")
- E152.5 260mm (12") (Two-handle)



E152.4

E152.11 Steel Frame Rollers - Economy

Economy version of above rollers, but from same materials.

- E152.11 100mm (4")
- E152.21 150mm (6")
- E152.31 200mm (8")

E152 Bronze Stand Brayer - Heidelberg

These rollers feature a cast bronze frame that sits on the benchtop with the roller held off the surface for easy cleaning, etc. When rolling up, simply turn over to opposite side. The 80mm diameter hand brayers are made for professional editioning and art colleges, and are among the largest diameter hand brayers made. The roller runs on a friction-free nylon bearing on a polished steel axle, requiring no maintenance or oiling for life. The rollers are clothed in a most sensitive gravure synthetic rubber and in a hardness of 35 Duo. The thickness of the rubber allows for regrind if badly cut.

- E152.02 Hand roller - 150mm (6")
- E152.03 Hand roller - 200mm (8")
- E152.04 Hand roller - 260mm (10")
- E152.05 Hand roller - 300mm (12")



E152.02

cast aluminium rollers

E153.010 A: Medium Diameter Rollers 0-140 mm

All-aluminium cast ends rolling pin style, with hollow tube centre for minimum weight. Length of 460mm and diameter of 140mm. A roll up distance of 350mm before any colour change.

E153.011 Spindle Roller - Soft

Offset Rubber (20-25). 460x140 (18x5).

E153.012 Spindle Roller - Medium

(30-35). 460x140 (18x5).

E153.013 Spindle Roller - Hard

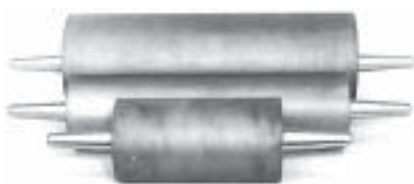
(40-45). 460x140 (18x5).

E153.04 Lithographic Roller

Hard Rubber. 140x360 (14x5).

E153.014 B: Large Diameter Rollers - 180 mm

Long roll up distance of 550mm before any colour change. Cast aluminium ends with light aluminium tube; hollow core for minimum weight.



E153.02 Spindle Roller (Soft)

(20-25). 510x180 (20x7).

E153.021 Spindle Roller (Medium)

(30-35). 510x180 (20x7).

E153.023 Spindle Roller (Hard)

(40-45). 510x180 (20x7).

rollers - nap

E155.01 Nap Leather Litho Roller

Best imported nap roller on oak spindle. 380x100mm (15x4"). For applying inks to plates. 60mm diameter with heavy metal frame and polished wooden handle. Stand keeps roller off table surface when inked. (4").

Note: When purchasing, ask for special roller conditioning instructions as incorrect conditioning may ruin roller and default warranty.



E155.01

E155.03A Synthetic Nap Roller

For colour litho editioning. Synthetic fibres embedded into rubber base for higher ink loads than ground rubber. 30cm. Made in USA.

E155.03A 30cm

E155.03B 38cm

E155.02 Roller Storage Box - Chipboard

Available for these rollers at nominal labour cost.

ink knives and spatulas

Ink knives and spatulas are important for working up ink straight from the tin. Take a small wad of ink and push it around on a glass slab with the ink knife, then turn the ink over with a spatula for at least 1 minute - longer in winter.

E157.01 Spatula - Small

Extra flexible ink mixer with 70mm (3") blade. For small ink mixes. Excellent for palette painting. Japanese.



E157.01

A273.07 Spatula - Heavy Duty

Ground steel with rosewood handle.

A273.08 19mm wide x 110mm long

A273.07 26mm wide x 150mm long

A273.04 35mm wide x 200mm long

A273.03 40mm wide x 255mm long



A273.07

E159.00 Ink Knife

For pushing ink on slab. Heavy duty ground steel with rosewood handle. Available in the following widths.

E159.01 25mm (1 1/8")

E159.02 38mm (1 1/2")



E159.01

A273.10 Spatula - Cranked Blade

Rosewood handle.

A273.12 30mm wide x 175mm long

A273.10 40mm wide x 200mm long



A273.10